

How to Approach September in the Stock Market (2000 vs. 2010)

www.historicalstockresearch.com

<http://www.historicalstockresearch.com>

This guide is Copyright © Historicalstockresearch.com and may not be redistributed, shared or sold without prior written consent of Historicalstockresearch.com. In order to let others know of this guide, please direct them to www.historicalstockresearch.com

FOR EDUCATIONAL PURPOSES ONLY

HSR Terms of Use

Historicalstockresearch.com is an educational resource, not an advisory or stock alert service.

Historicalstockresearch.com is not an investment advisor and does not provide investment advice or recommendations. You should not use the content on historicalstockresearch.com for investment advice in any market. Any content on historicalstockresearch.com that may be deemed as investment advice is impersonal and is not directed towards the investment needs of any individual.

Historicalstockresearch.com is free and contains historical and current stock market research. All content on historicalstockresearch.com is set up for educational purposes only and is not meant to be a solicitation or recommendation to buy, sell or hold any securities mentioned. Readers of historicalstockresearch.com should consult with a registered financial advisor to properly assess their investment objectives and risk tolerance before investing in the stock market.

Historicalstockresearch.com cannot make you a profitable stock investor because consistent profitability is also a function of other items besides historical stock research. One of these is having a personalized stock investing plan that uses specific rules to help you minimize risk. There are no guarantees in the stock market and historicalstockresearch.com does not guarantee profits to you with this educational site.

HISTORICALSTOCKRESEARCH.COM IS NOT RESPONSIBLE FOR ANY LOSSES EXPERIENCED BY INDIVIDUALS WHO USE ITS EDUCATIONAL CONTENT TO MAKE INVESTMENT (FINANCIAL) DECISIONS.

Historical precedent analysis is not a substitute for a personalized stock investing plan with proper risk management. While history often repeats itself, there is no guarantee that it will unfold in a similar manner as previously observed or described. Past performance is not indicative of future returns.

The historical charts/price behaviors/models used on historicalstockresearch.com have not been evaluated for statistical significance. They are only meant to help you understand stock price behaviors and common outcomes of those price behaviors. They are not to be used for anything other than educational purposes.

www.historicalstockresearch.com

Improve Chart Reading. Make Better Decisions.

All Rights Reserved. Reproduction without permission prohibited
Copyright© Historicalstockresearch.com

FOR EDUCATIONAL PURPOSES ONLY

Making better decisions using historical precedent analysis is a process and not an event. Nobody knows the outcome of any one technical event in the stock market, but making a consistent decision (following a rule) over a series of events may improve your decision-making ability.

Additional Terms of Use

1. Do not reprint, republish, repost, or otherwise distribute or transmit content or images/charts presented on historicalstockresearch.com. Historicalstockresearch.com is free, but just because you may be able to copy the content doesn't mean you own it. Unauthorized use of (including hotlinking) or copying of the content on historicalstockresearch.com can subject you to civil or even criminal liability. **Please don't violate copyright law.**
2. You may print out the charts for your personal use only.

Copyright and Trademark Law

All editorial content and graphics/images/charts on historicalstockresearch.com are protected by U.S. copyright and international treaties and may not be copied or re-used without the express written permission of historicalstockresearch.com, which reserves all rights.

2

Limitation of Liability

HISTORICALSTOCKRESEARCH.COM IS FREE AND PROVIDES THE INFORMATION ON THIS WEBSITE "AS IS" WITHOUT WARRANTIES OF ANY KIND. YOU ALSO AGREE THAT HISTORICALSTOCKRESEARCH.COM SHALL NOT BE RESPONSIBLE FOR ANY DOWNLOADING OF MATERIALS FOUND ON OR THROUGHOUT HISTORICALSTOCKRESEARCH.COM. ALL DOWNLOADING IS DONE AT YOUR OWN RISK AND YOU WILL BE SOLELY RESPONSIBLE FOR ANY DAMAGES TO YOUR COMPUTER OR DATA THAT RESULTS. HISTORICALSTOCKRESEARCH.COM DOES NOT WARRANT THAT THE USE OR PERFORMANCE OF THIS WEBSITE WILL BE TIMELY, UNINTERRUPTED OR FREE OF ERROR, OR THAT HISTORICALSTOCKRESEARCH.COM OR ITS SERVER WILL BE FREE OF VIRUSES. IN NO EVENT SHALL HISTORICALSTOCKRESEARCH.COM OR ERIK GRYWALSKI BE LIABLE FOR ANY LOSS OR INJURY, DIRECT OR INDIRECT, INCIDENTAL, CONSEQUENTIAL, SPECIAL OR EXEMPLARY DAMAGES, OR ANY DAMAGES WHATSOEVER ARISING FROM THE USE OR PERFORMANCE OF HISTORICALSTOCKRESEARCH.COM OR FROM ANY INFORMATION PROVIDED THROUGH HISTORICALSTOCKRESEARCH.COM, EVEN IF HISTORICALSTOCKRESEARCH.COM HAS BEEN ADVISED OF THE POSSIBILITY OF SUCH DAMAGES.

www.historicalstockresearch.com

Improve Chart Reading. Make Better Decisions.

All Rights Reserved. Reproduction without permission prohibited
Copyright© Historicalstockresearch.com

Chart 1: PMCS bases, but doesn't lead the market in the Summer of 2000

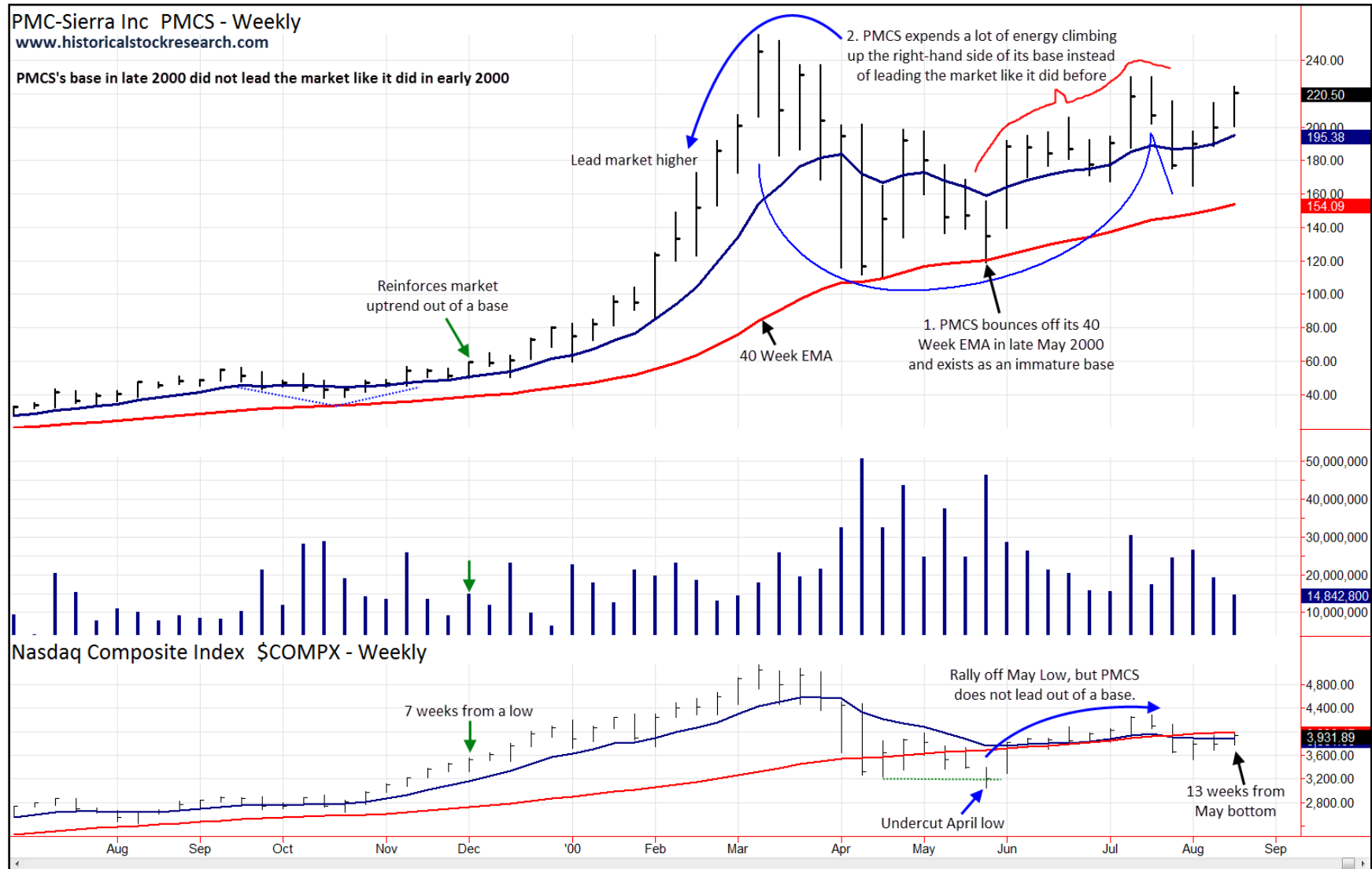


Chart created with TradeStation. ©TradeStation Technologies, Inc. All Rights Reserved.

www.historicalstockresearch.com

Improve Chart Reading. Make Better Decisions.

All Rights Reserved. Reproduction without permission prohibited
Copyright© Historicalstockresearch.com

Chart 2: PMCS breaks down after its failed base breakout in the Fall of 2000

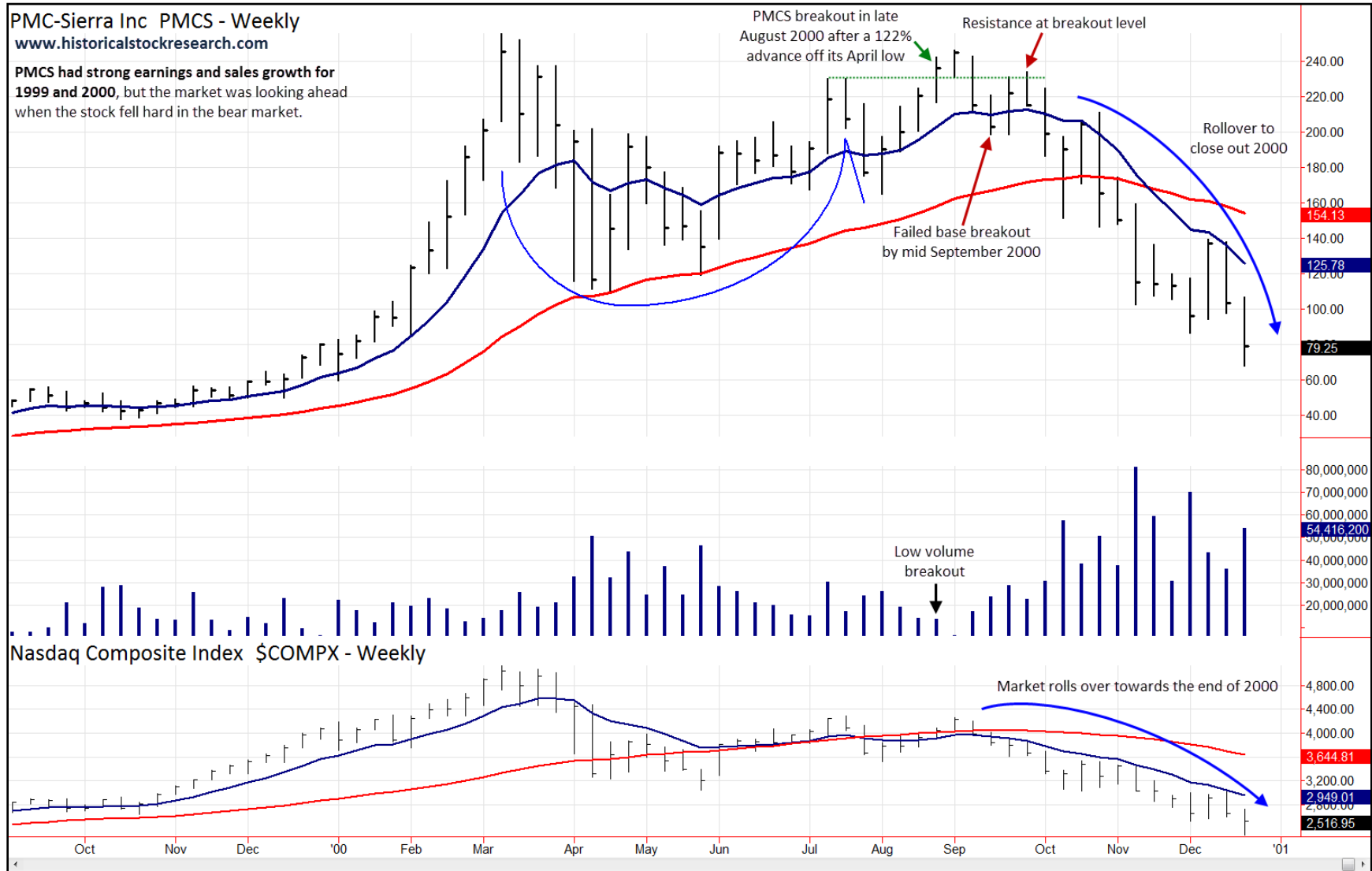


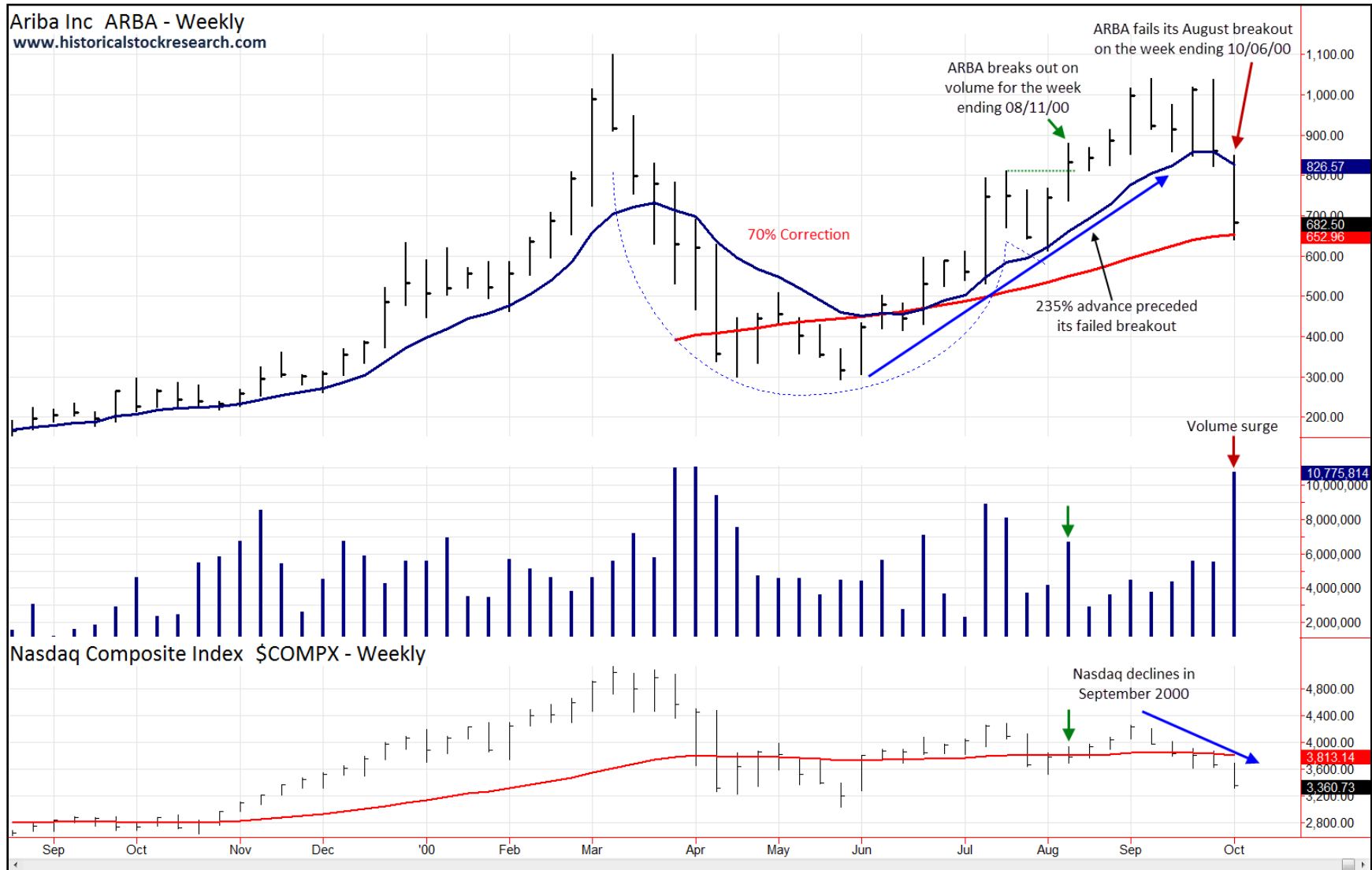
Chart created with TradeStation. ©TradeStation Technologies, Inc. All Rights Reserved.

www.historicalstockresearch.com

Improve Chart Reading. Make Better Decisions.

All Rights Reserved. Reproduction without permission prohibited
 Copyright© Historicalstockresearch.com

Chart 3: Like PMCS, ARBA's breakout failed after a large advance off its low



5

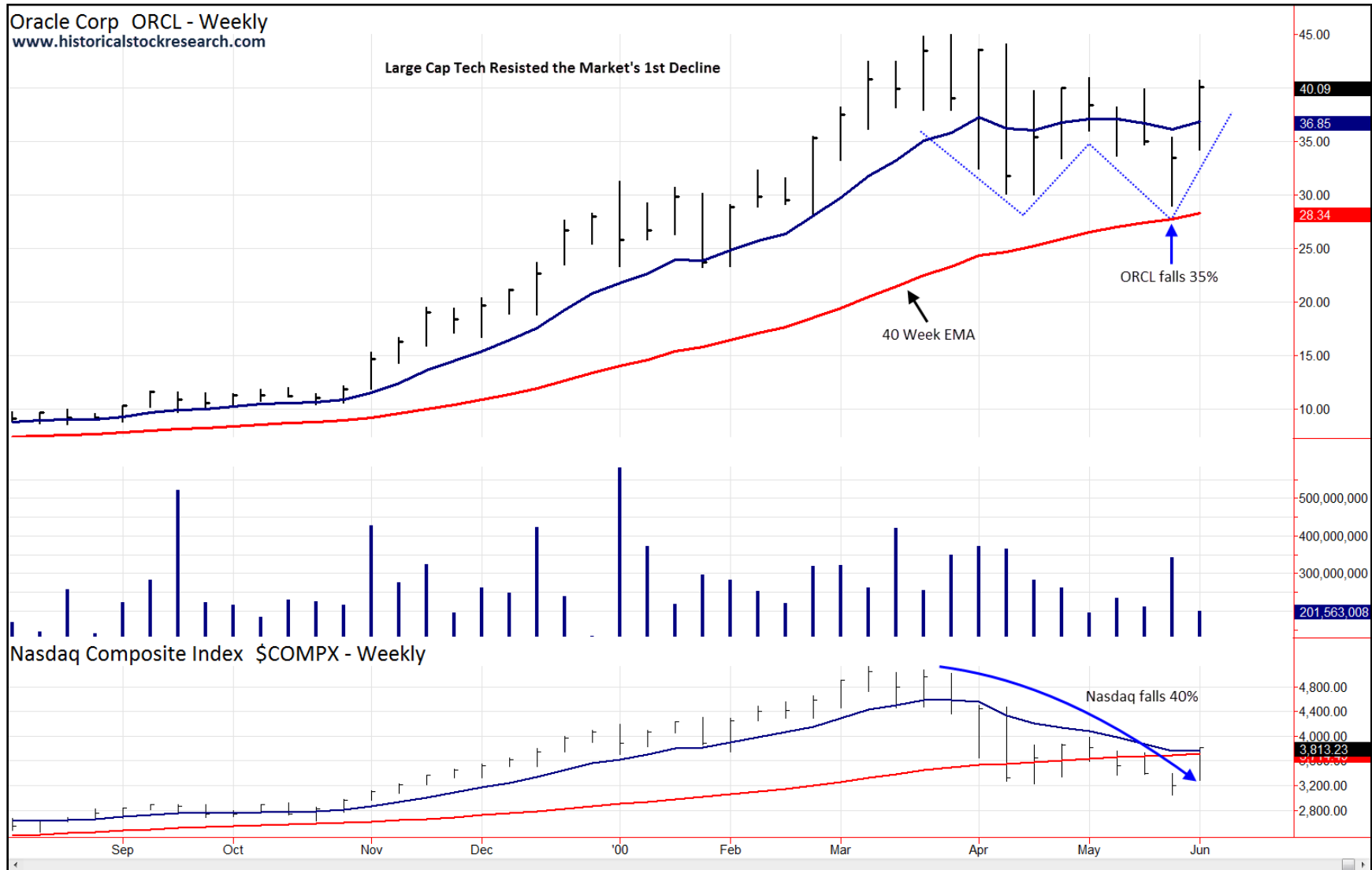
Chart created with TradeStation. ©TradeStation Technologies, Inc. All Rights Reserved.

www.historicalstockresearch.com

Improve Chart Reading. Make Better Decisions.

All Rights Reserved. Reproduction without permission prohibited
Copyright© Historicalstockresearch.com

Chart 4: Large Cap Tech was a home to hide in during the Nasdaq's 1st decline in 2000



6

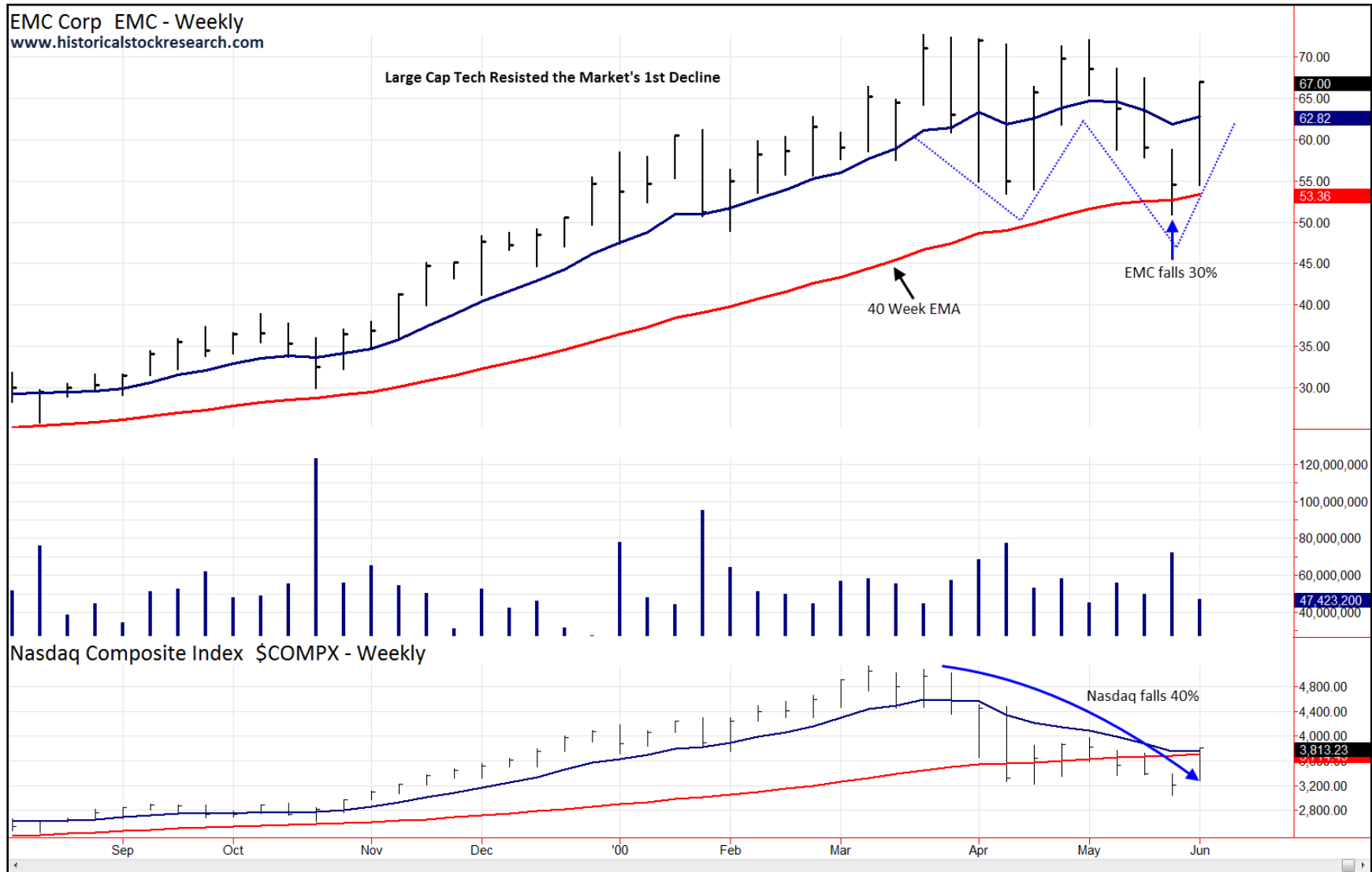
Chart created with TradeStation. ©TradeStation Technologies, Inc. All Rights Reserved.

www.historicalstockresearch.com

Improve Chart Reading. Make Better Decisions.

All Rights Reserved. Reproduction without permission prohibited
Copyright© Historicalstockresearch.com

Chart 5: Large Cap Tech was a home to hide in during the Nasdaq's 1st decline in 2000



7

Chart created with TradeStation. ©TradeStation Technologies, Inc. All Rights Reserved.

www.historicalstockresearch.com

Improve Chart Reading. Make Better Decisions.

All Rights Reserved. Reproduction without permission prohibited
Copyright© Historicalstockresearch.com

Chart 6: Large Cap Tech was a home to hide in during the Nasdaq's 1st decline in 2000

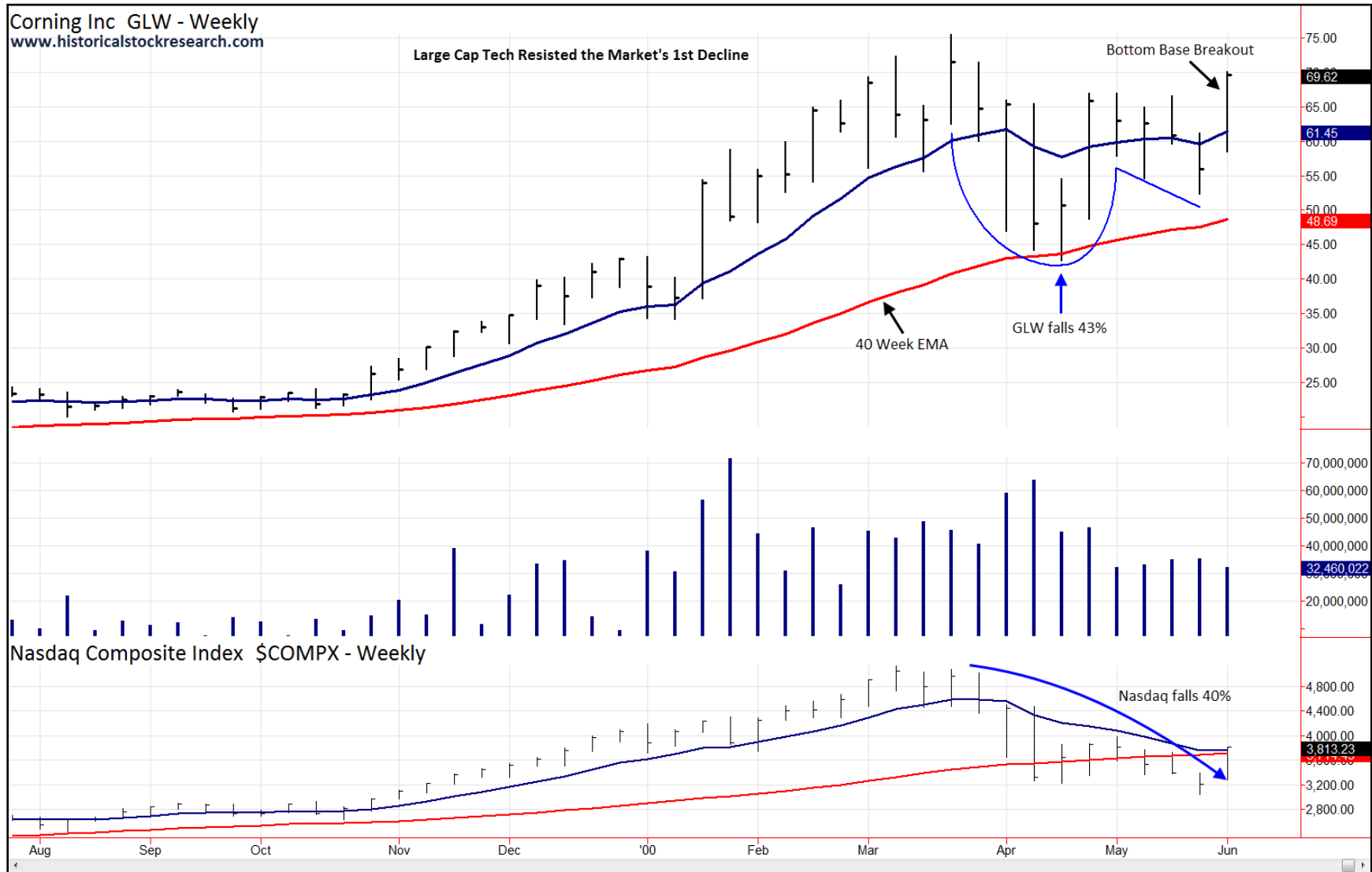


Chart created with TradeStation. ©TradeStation Technologies, Inc. All Rights Reserved.

www.historicalstockresearch.com

Improve Chart Reading. Make Better Decisions.

All Rights Reserved. Reproduction without permission prohibited
Copyright© Historicalstockresearch.com

Chart 7: Large Cap Tech was a home to hide in during the Nasdaq's 1st decline in 2000

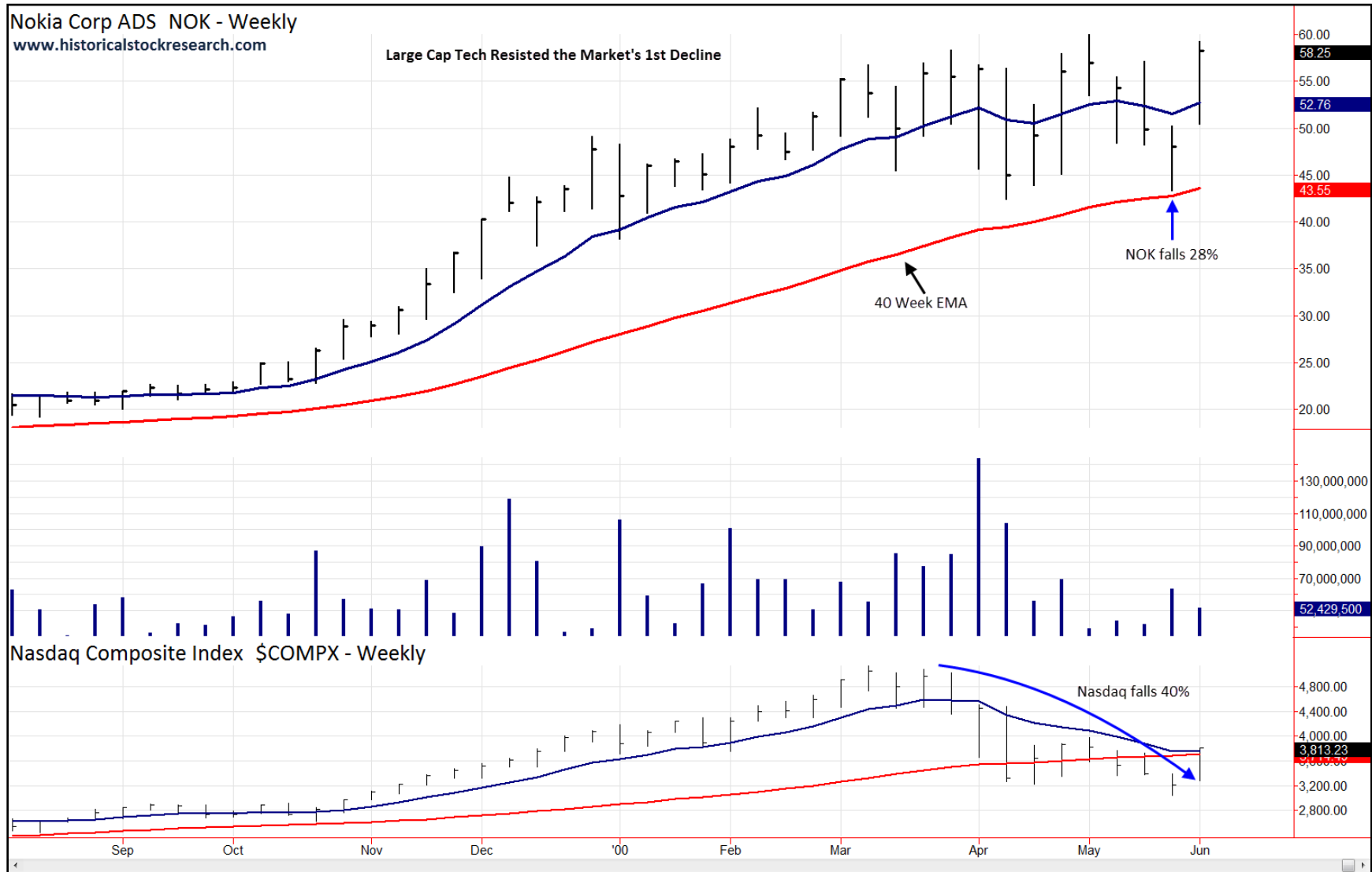


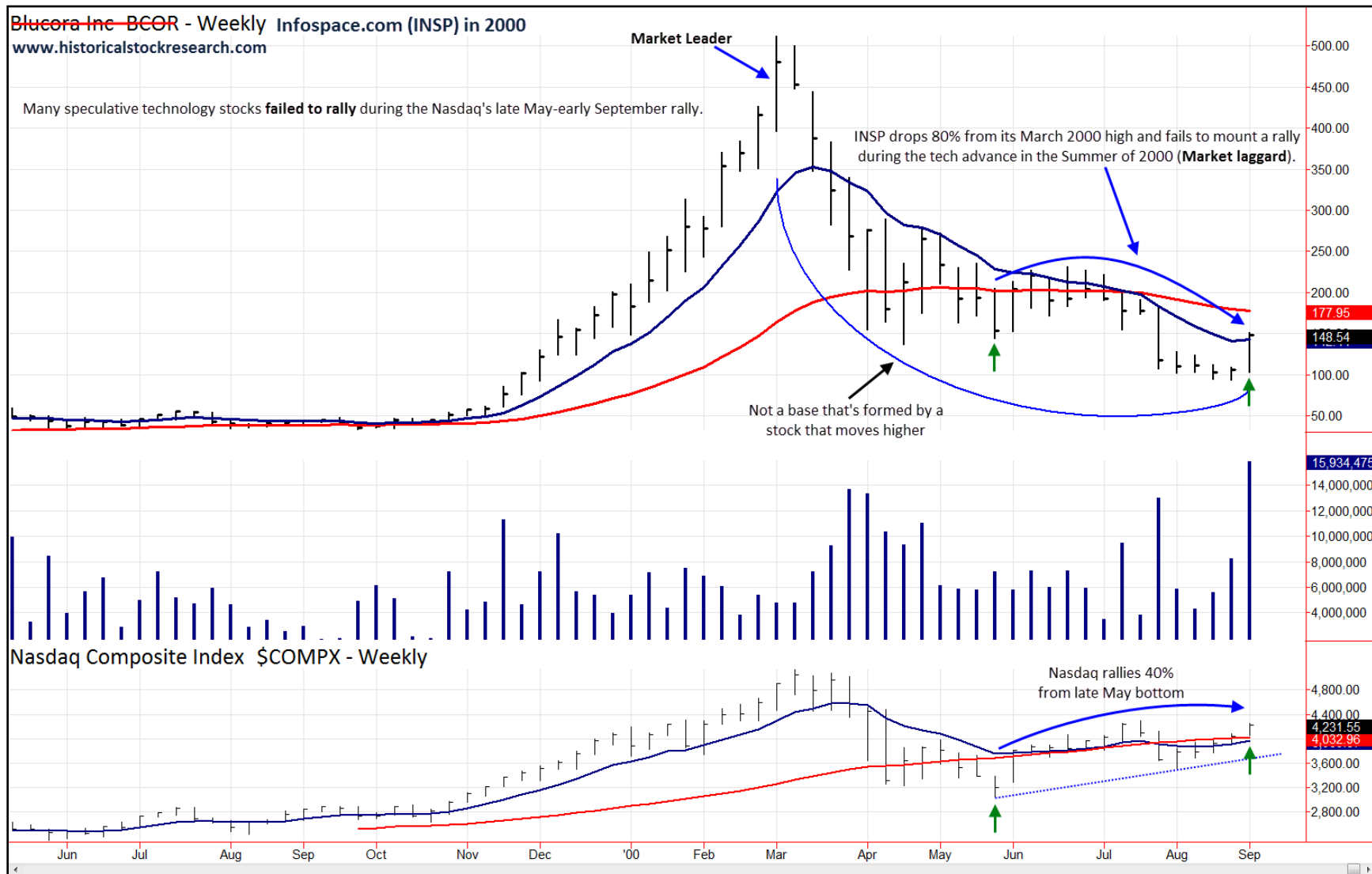
Chart created with TradeStation. ©TradeStation Technologies, Inc. All Rights Reserved.

www.historicalstockresearch.com

Improve Chart Reading. Make Better Decisions.

All Rights Reserved. Reproduction without permission prohibited
Copyright© Historicalstockresearch.com

Chart 8: Many speculative stocks failed to rally during the Nasdaq's 40% summer rally



10

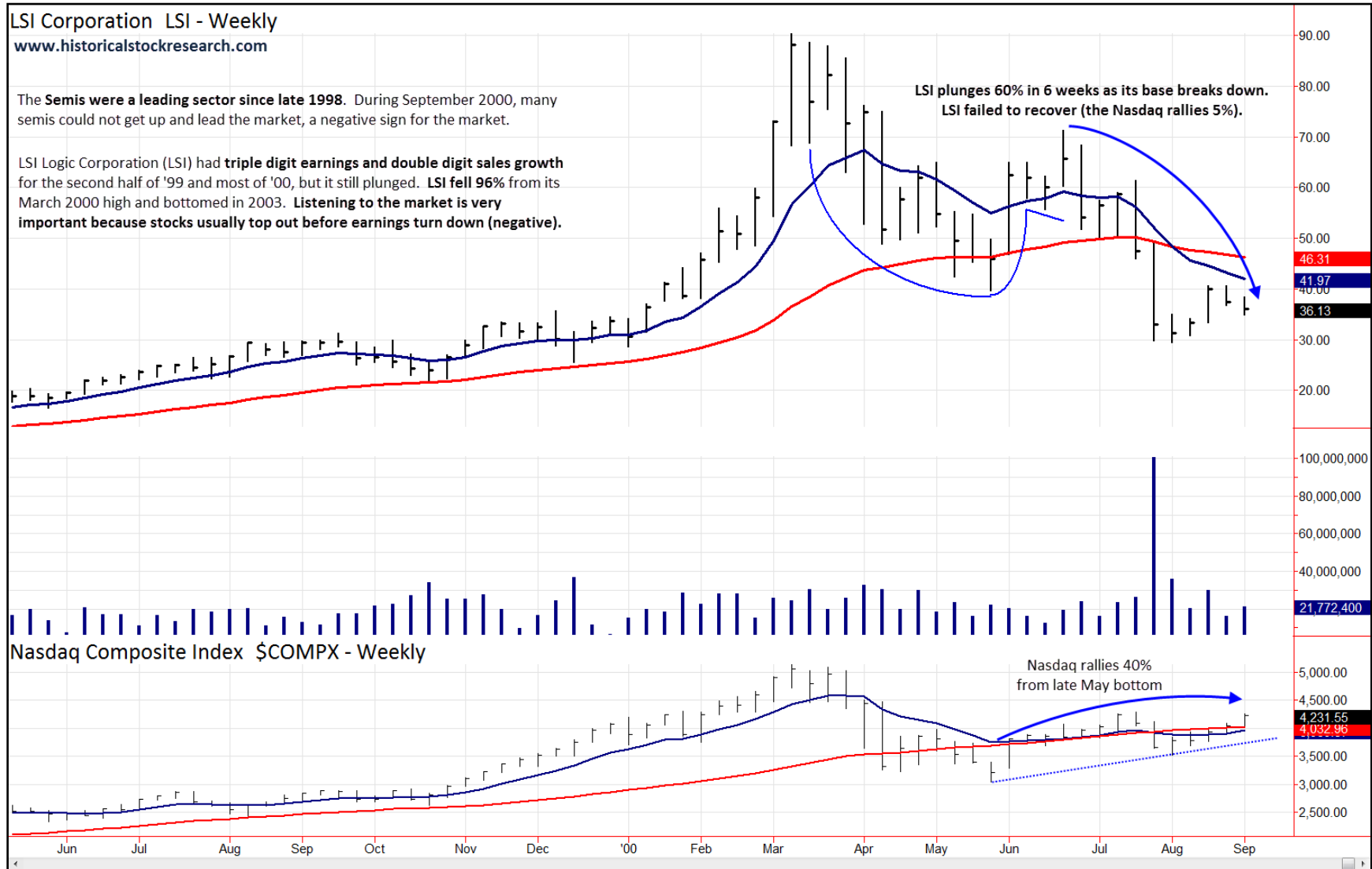
Chart created with TradeStation. ©TradeStation Technologies, Inc. All Rights Reserved.

www.historicalstockresearch.com

Improve Chart Reading. Make Better Decisions.

All Rights Reserved. Reproduction without permission prohibited
Copyright© Historicalstockresearch.com

Chart 9: Some profitable semiconductors broke down during the Nasdaq's 40% summer rally



11

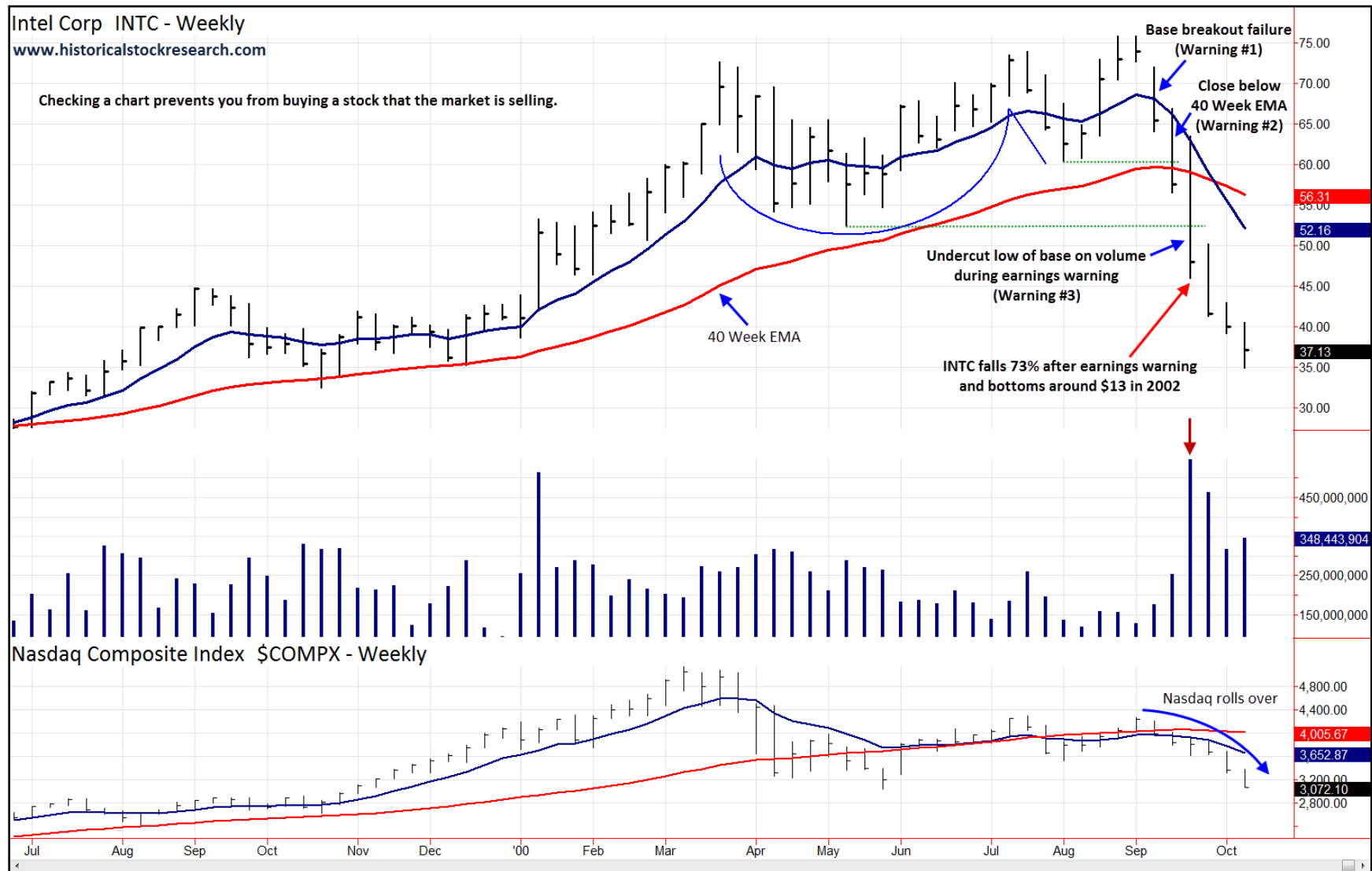
Chart created with TradeStation. ©TradeStation Technologies, Inc. All Rights Reserved.

www.historicalstockresearch.com

Improve Chart Reading. Make Better Decisions.

All Rights Reserved. Reproduction without permission prohibited
Copyright© Historicalstockresearch.com

Chart 10: Intel's (INTC) warning made things difficult for technology in the Fall of 2000



12

Chart created with TradeStation. ©TradeStation Technologies, Inc. All Rights Reserved.

www.historicalstockresearch.com

Improve Chart Reading. Make Better Decisions.

All Rights Reserved. Reproduction without permission prohibited
Copyright© Historicalstockresearch.com

Chart 11: Qualcomm (QCOM) reversed its role during the Nasdaq's 40% summer rally

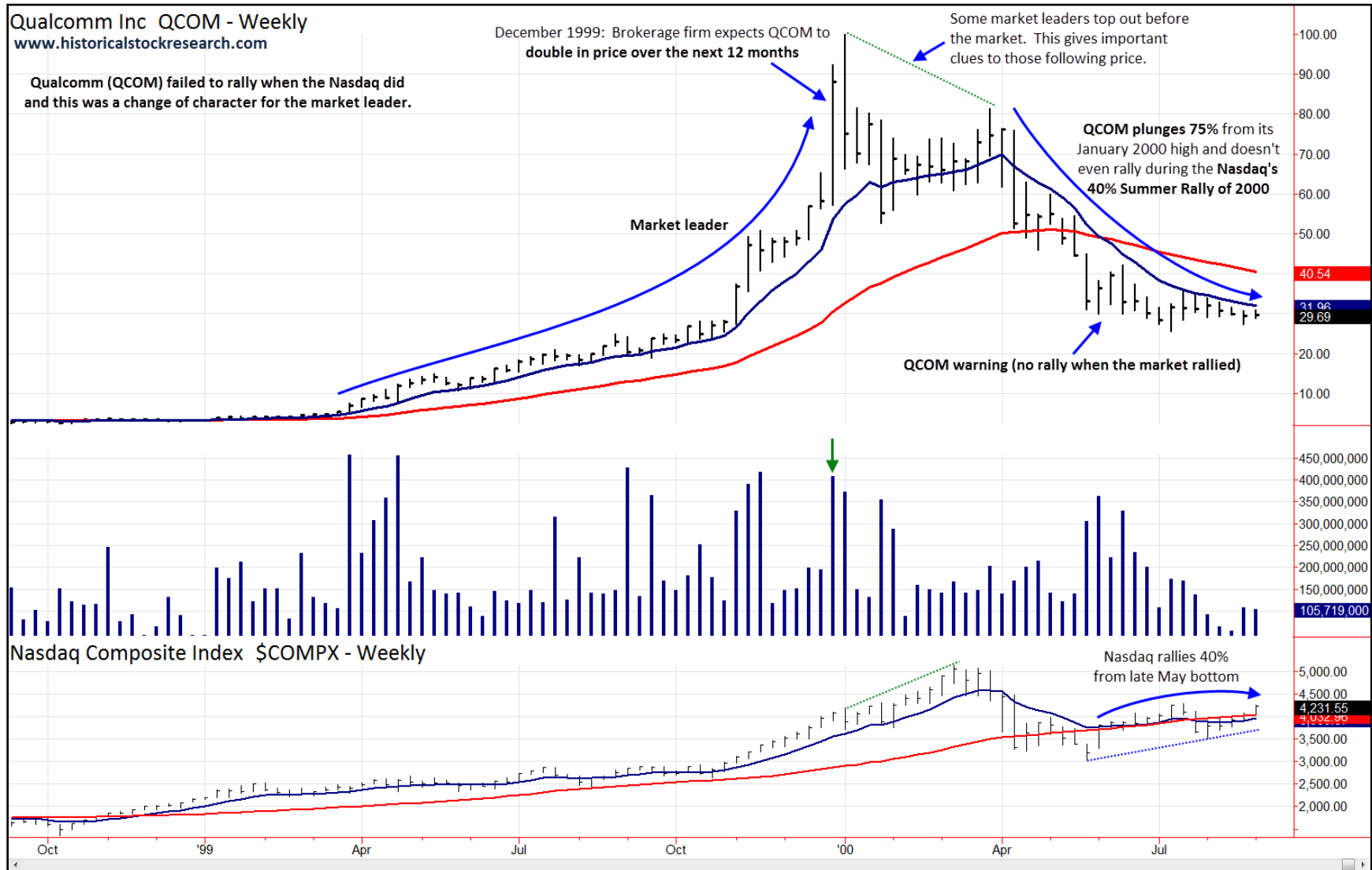


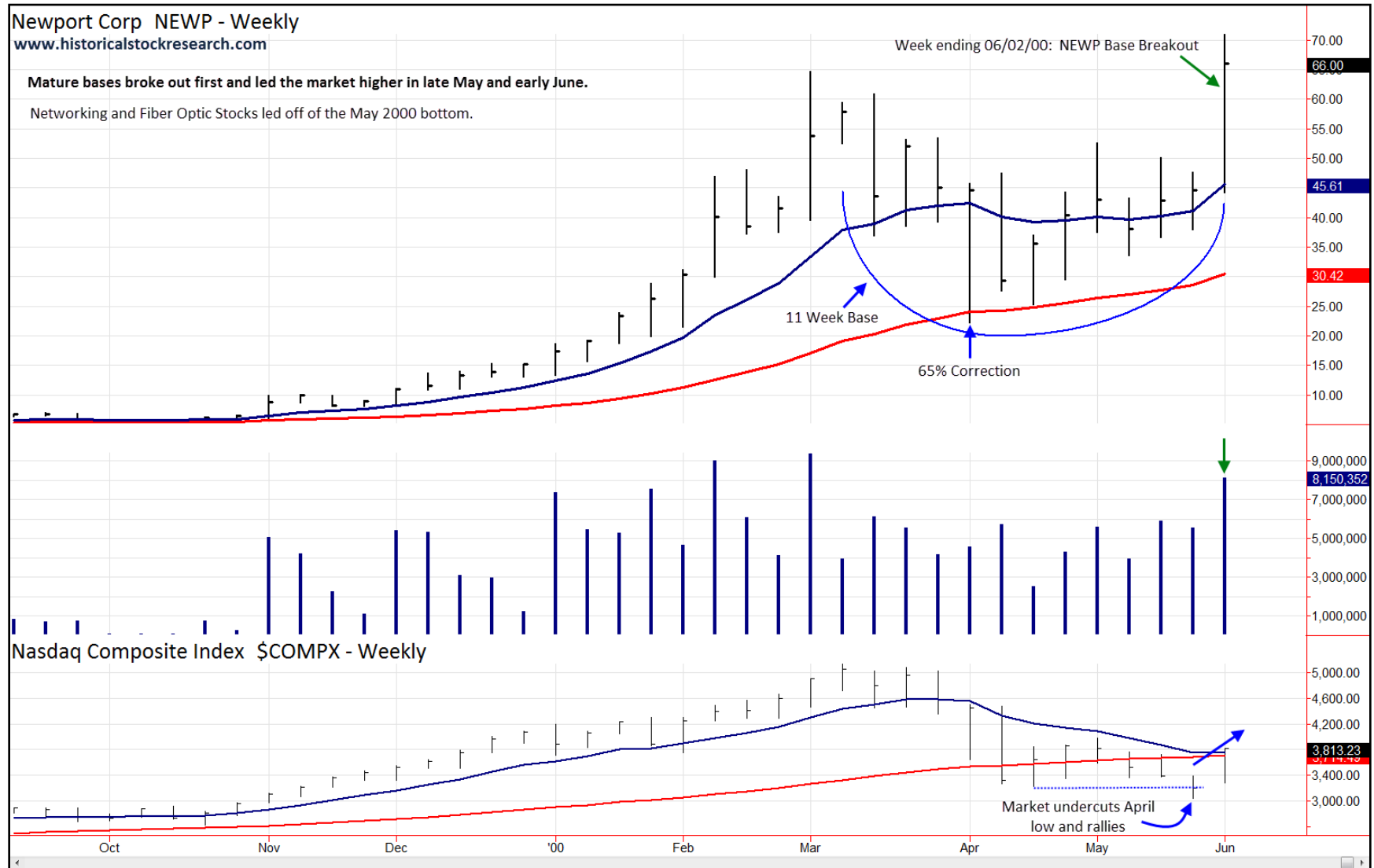
Chart created with TradeStation. ©TradeStation Technologies, Inc. All Rights Reserved.

www.historicalstockresearch.com

Improve Chart Reading. Make Better Decisions.

All Rights Reserved. Reproduction without permission prohibited
Copyright© Historicalstockresearch.com

Chart 12: Newport (NEWP) broke out in early June and led the market's summer rally



14

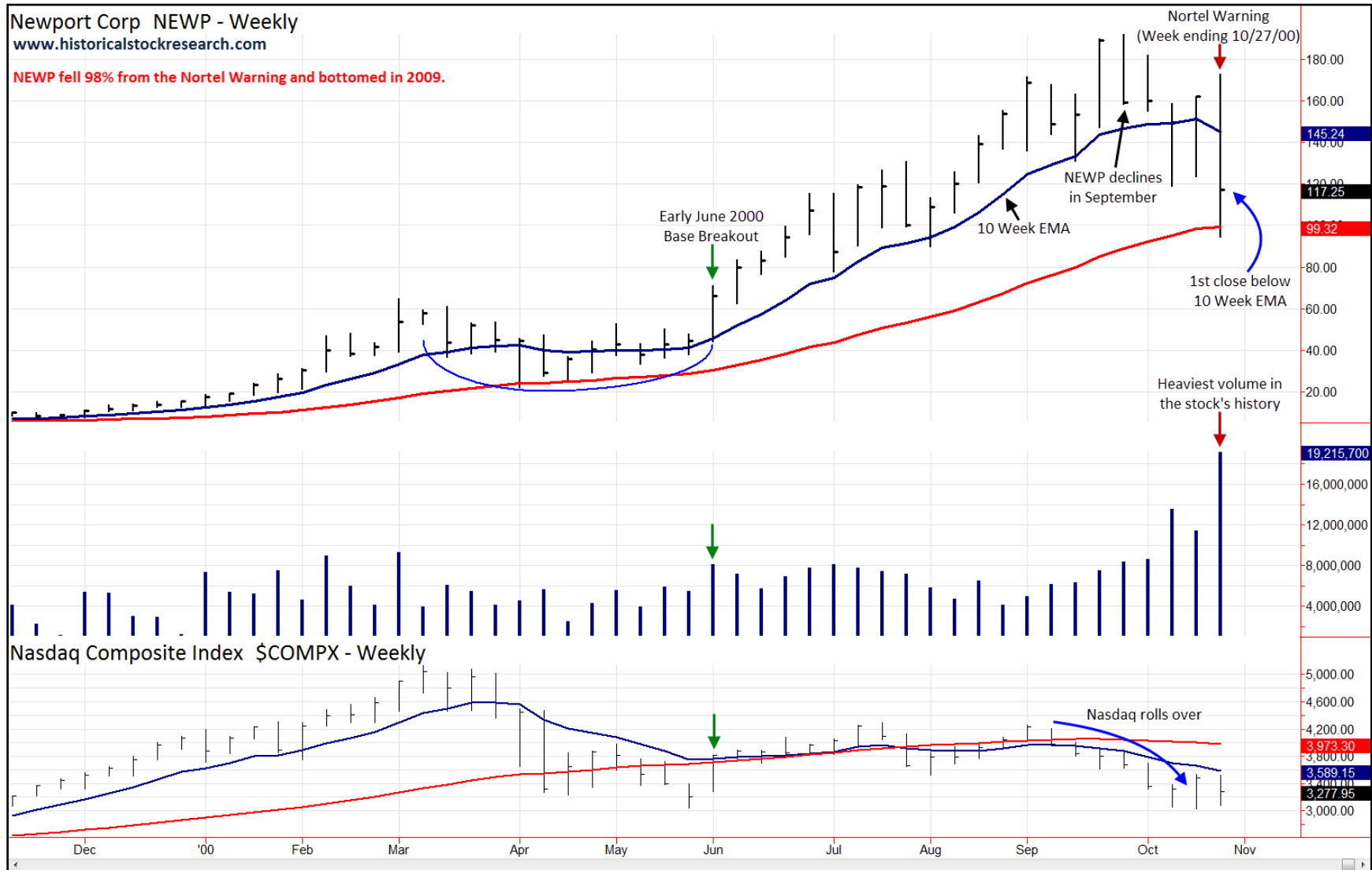
Chart created with TradeStation. ©TradeStation Technologies, Inc. All Rights Reserved.

www.historicalstockresearch.com

Improve Chart Reading. Make Better Decisions.

All Rights Reserved. Reproduction without permission prohibited
Copyright© Historicalstockresearch.com

Chart 13: Nortel Networks sank the remaining technology leaders (NEWP) in the Fall of 2000



15

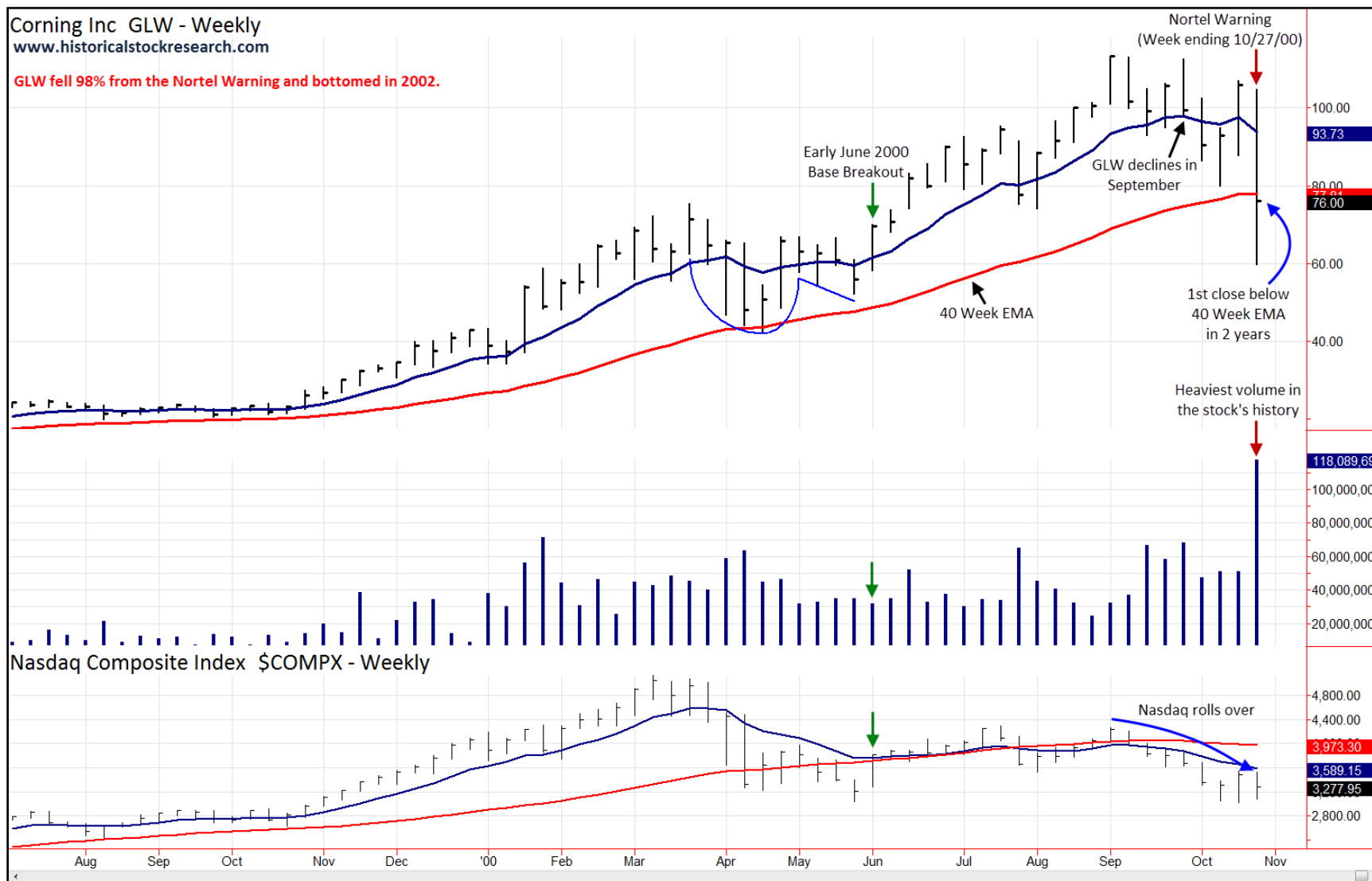
Chart created with TradeStation. ©TradeStation Technologies, Inc. All Rights Reserved.

www.historicalstockresearch.com

Improve Chart Reading. Make Better Decisions.

All Rights Reserved. Reproduction without permission prohibited
Copyright© Historicalstockresearch.com

Chart 14: Nortel Networks sank the remaining technology leaders (GLW) in the Fall of 2000



16

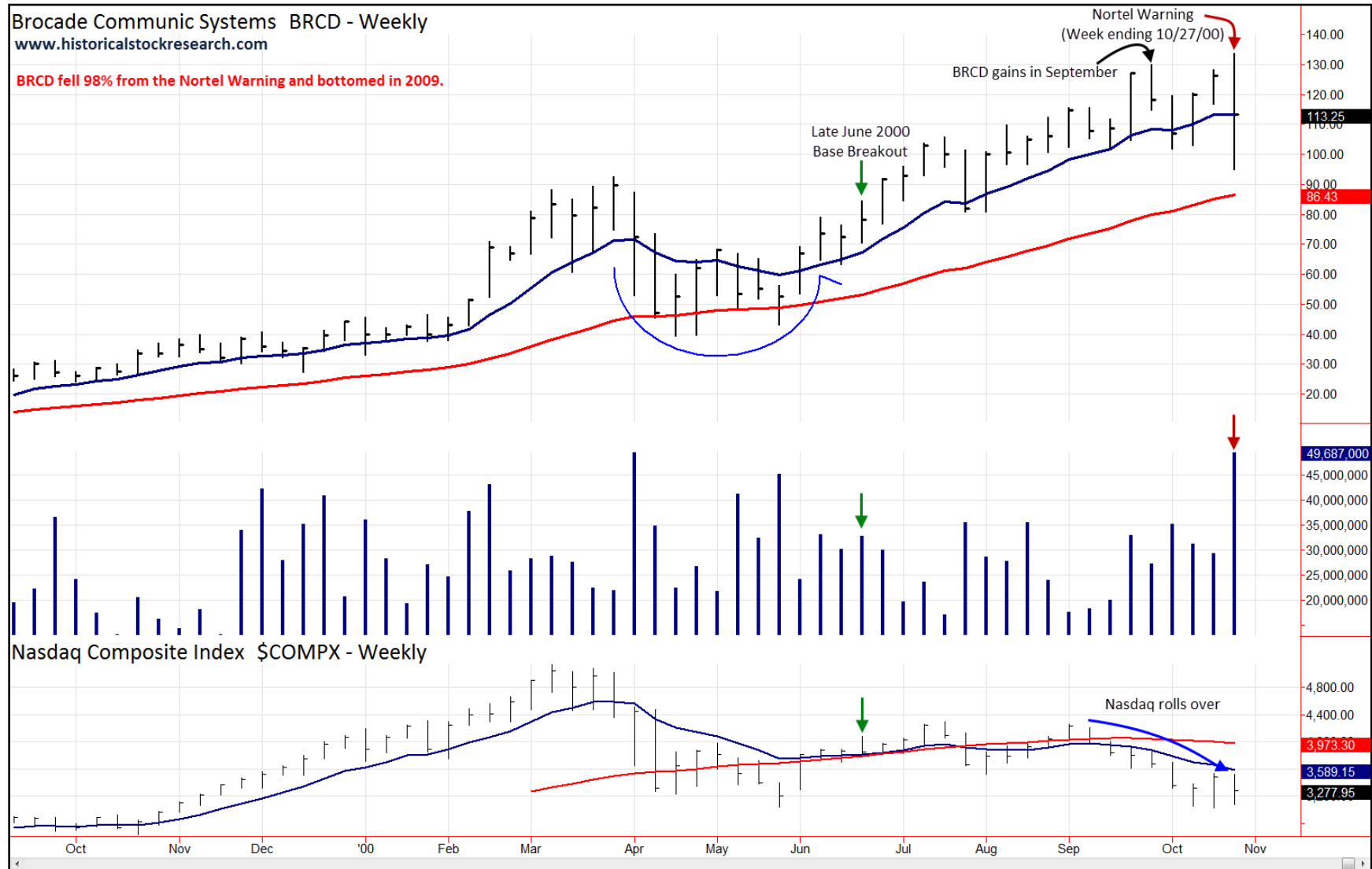
Chart created with TradeStation. ©TradeStation Technologies, Inc. All Rights Reserved.

www.historicalstockresearch.com

Improve Chart Reading. Make Better Decisions.

All Rights Reserved. Reproduction without permission prohibited
Copyright© Historicalstockresearch.com

Chart 15: Nortel Networks sank the remaining technology leaders (BRCD) in the Fall of 2000



17

Chart created with TradeStation. ©TradeStation Technologies, Inc. All Rights Reserved.

www.historicalstockresearch.com

Improve Chart Reading. Make Better Decisions.

All Rights Reserved. Reproduction without permission prohibited
Copyright© Historicalstockresearch.com

Chart 16: Nortel Networks sank the remaining technology leaders (JNPR) in the Fall of 2000

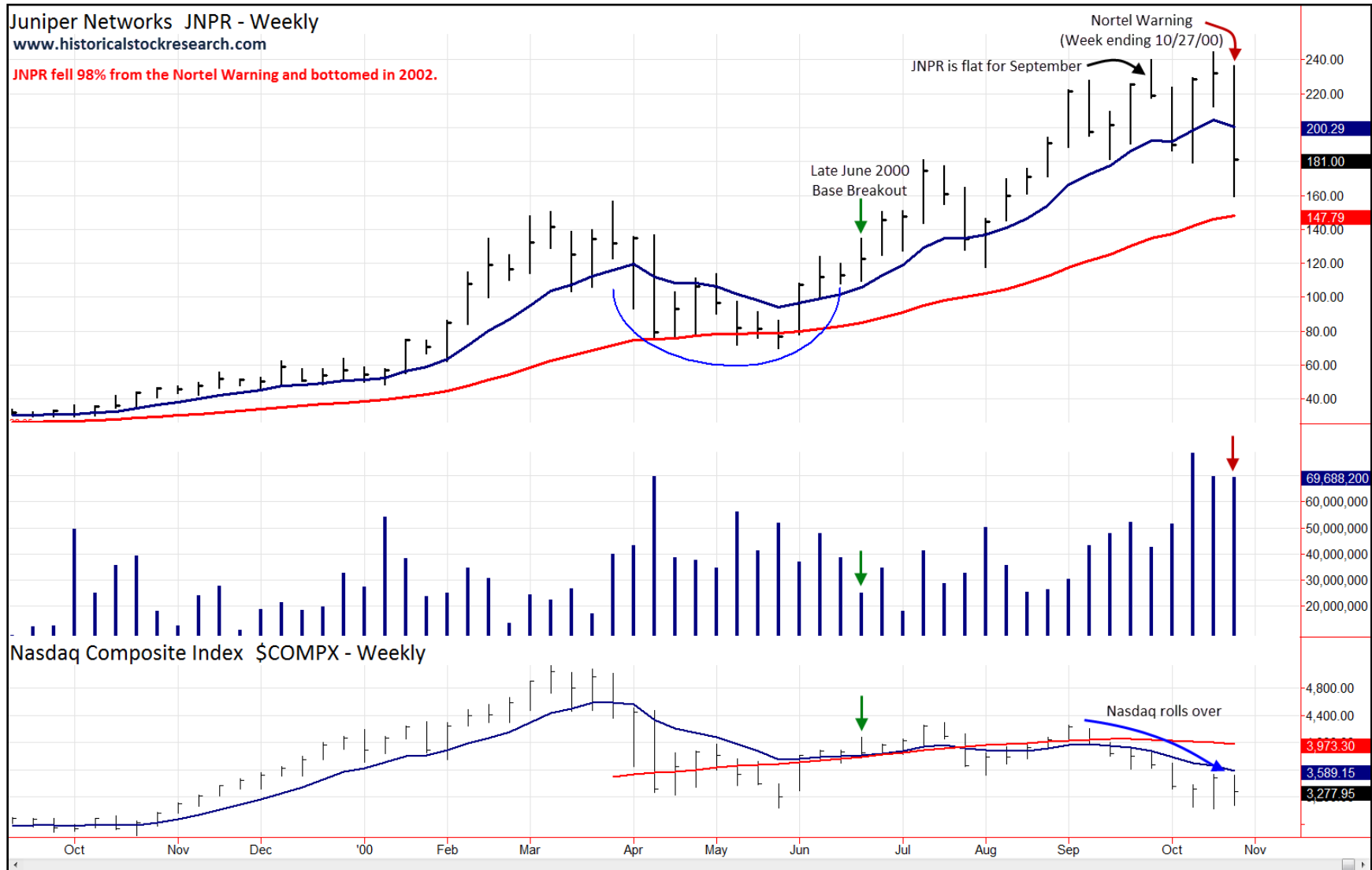


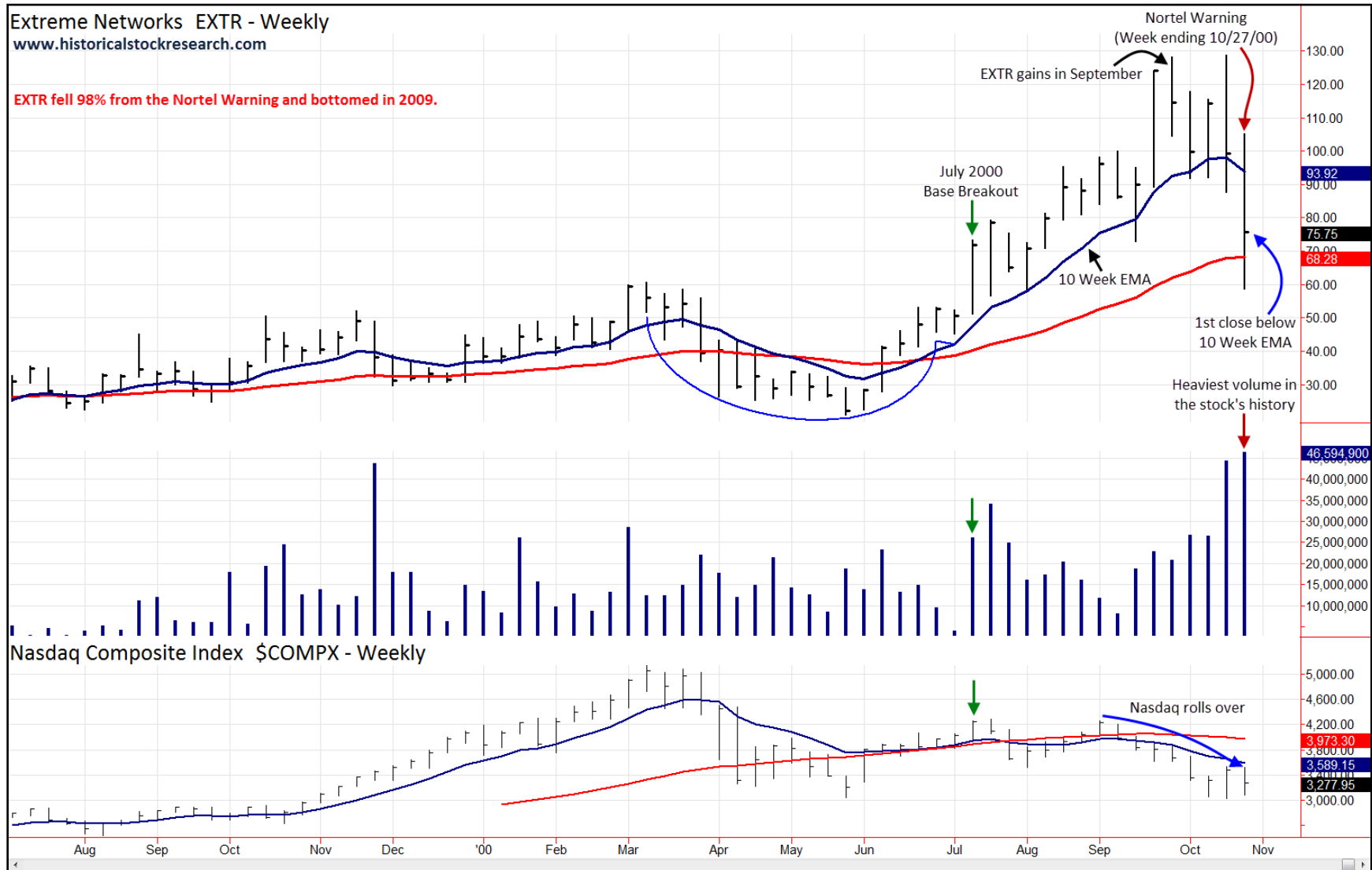
Chart created with TradeStation. ©TradeStation Technologies, Inc. All Rights Reserved.

www.historicalstockresearch.com

Improve Chart Reading. Make Better Decisions.

All Rights Reserved. Reproduction without permission prohibited
Copyright© Historicalstockresearch.com

Chart 17: Nortel Networks sank the remaining technology leaders (EXTR) in the Fall of 2000



19

Chart created with TradeStation. ©TradeStation Technologies, Inc. All Rights Reserved.

www.historicalstockresearch.com

Improve Chart Reading. Make Better Decisions.

All Rights Reserved. Reproduction without permission prohibited
Copyright© Historicalstockresearch.com

Chart 18: Nortel Networks sank the remaining technology leaders (AMCC) in the Fall of 2000

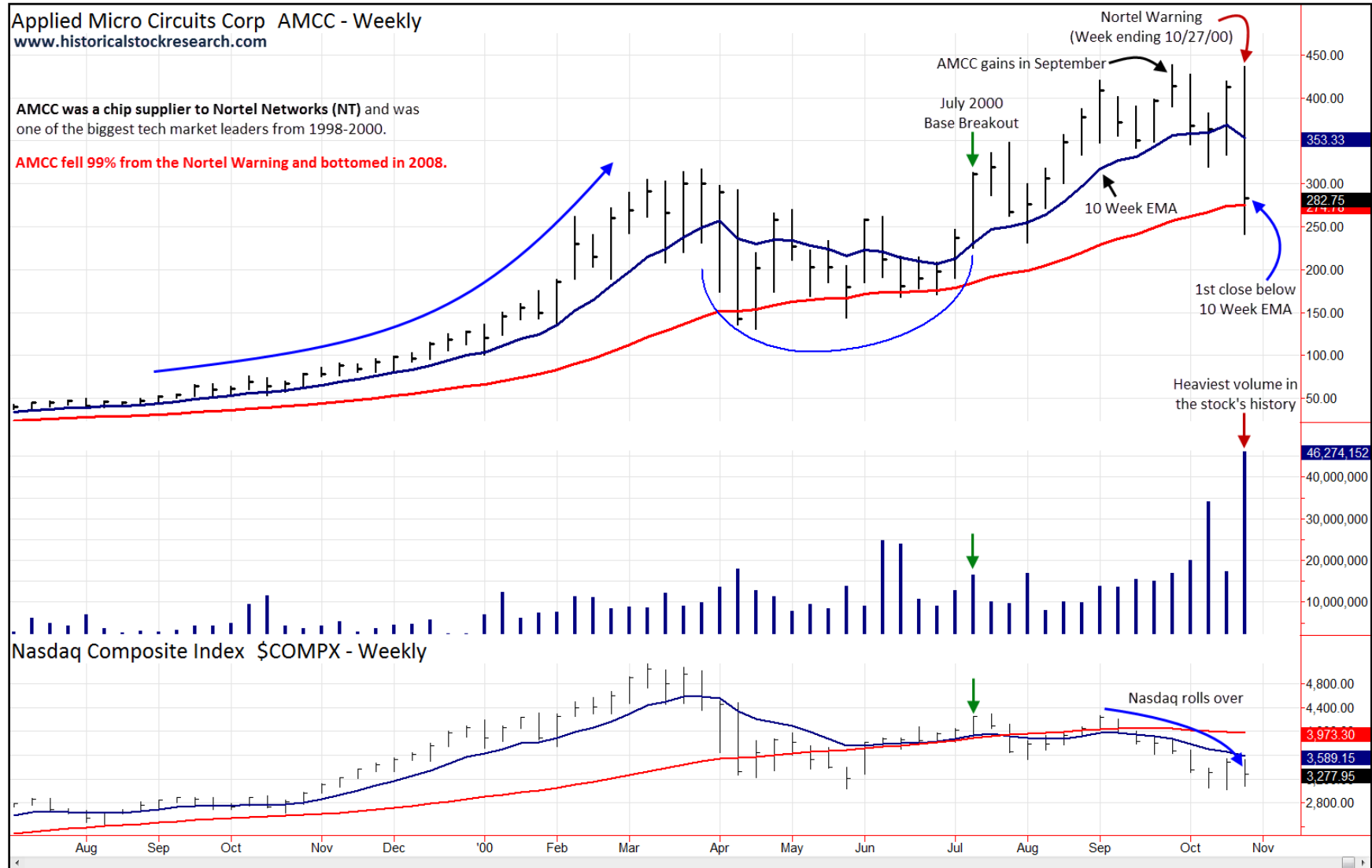


Chart created with TradeStation. ©TradeStation Technologies, Inc. All Rights Reserved.

www.historicalstockresearch.com

Improve Chart Reading. Make Better Decisions.

All Rights Reserved. Reproduction without permission prohibited
Copyright© Historicalstockresearch.com

Chart 19: Nortel Networks sank the remaining technology leaders (CIEN) in the Fall of 2000

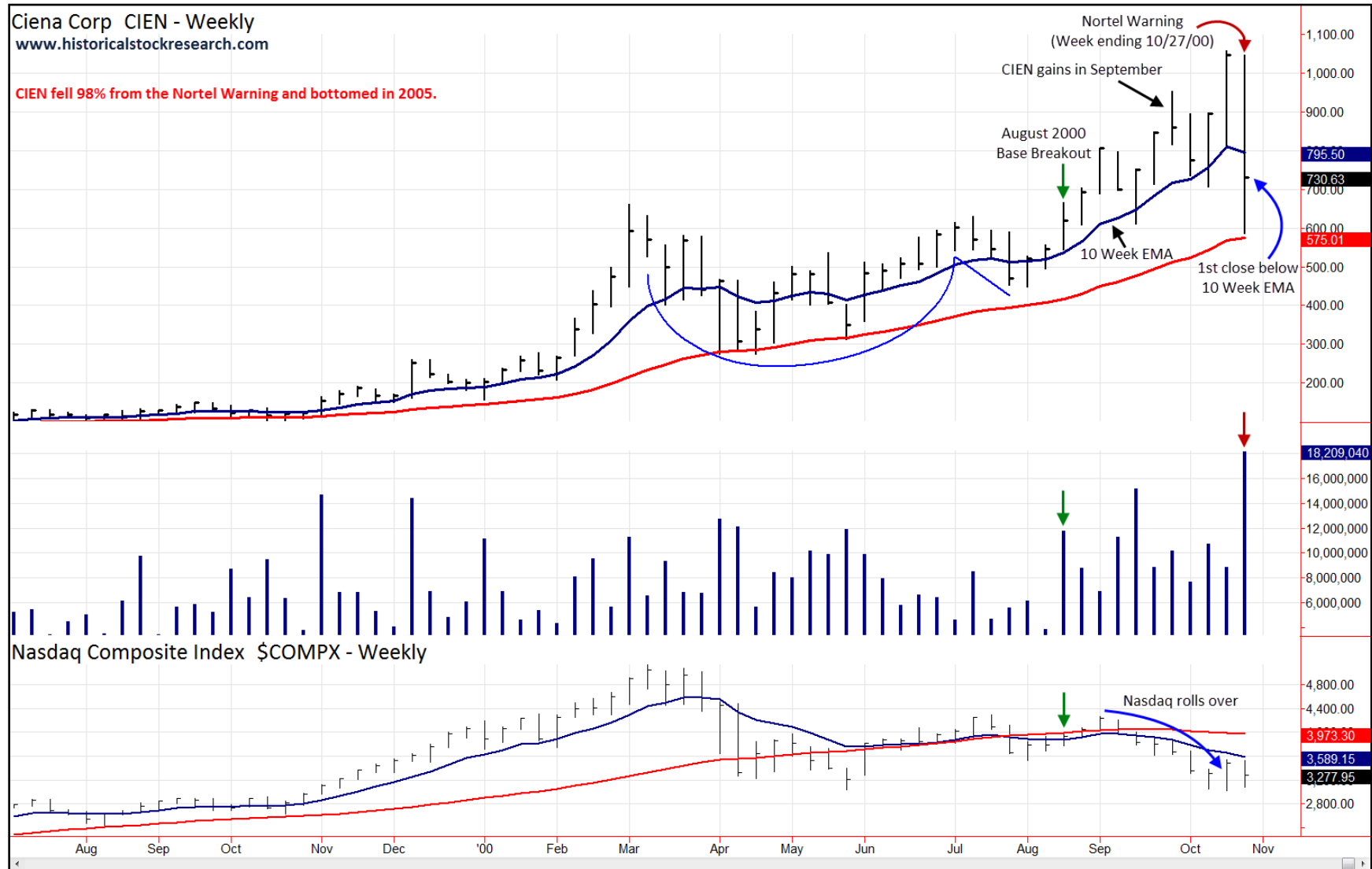


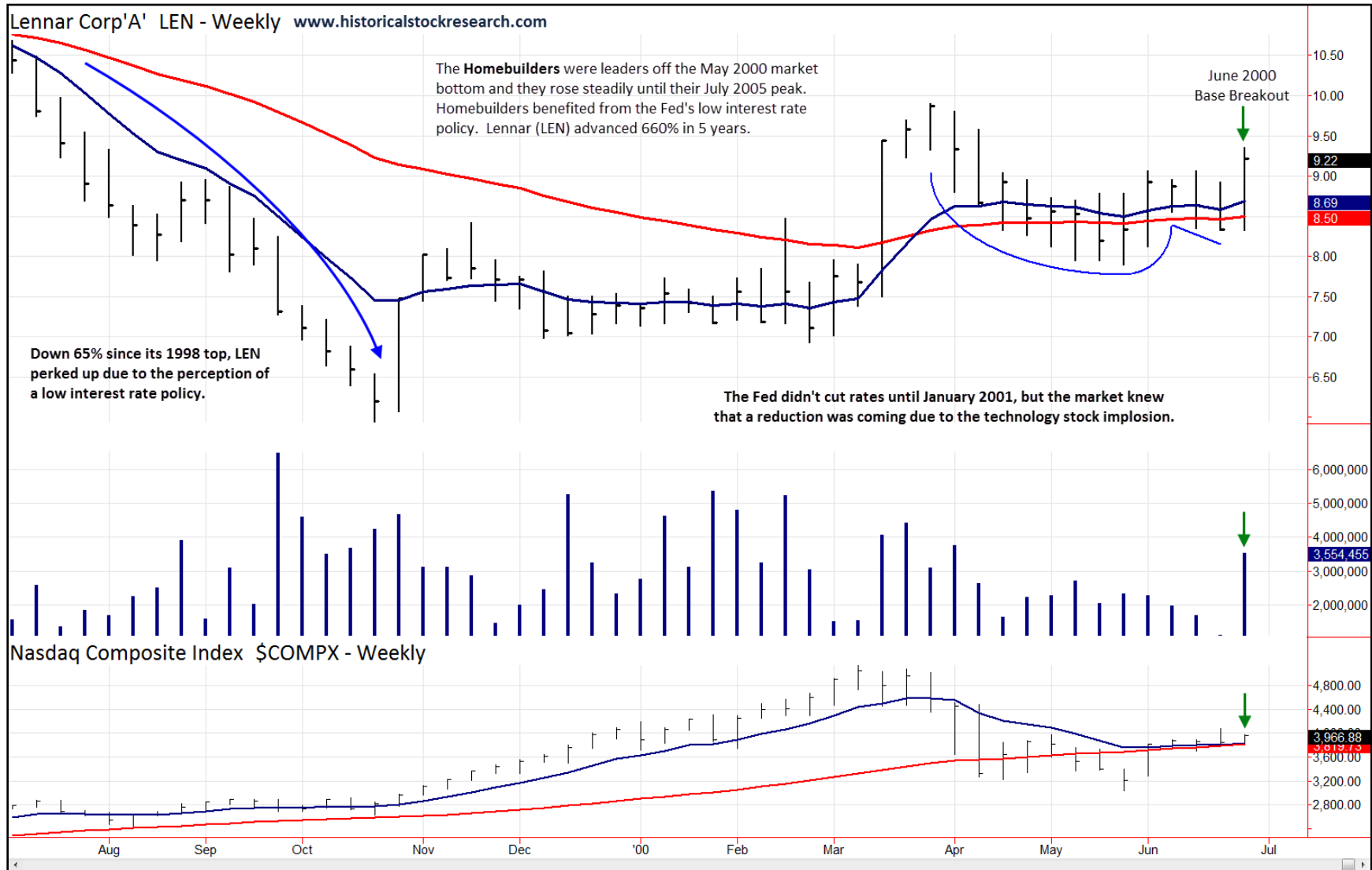
Chart created with TradeStation. ©TradeStation Technologies, Inc. All Rights Reserved.

www.historicalstockresearch.com

Improve Chart Reading. Make Better Decisions.

All Rights Reserved. Reproduction without permission prohibited
Copyright© Historicalstockresearch.com

Chart 20: Homebuilders broke out in the Summer of 2000 as tech stocks rallied one last time



22

Chart created with TradeStation. ©TradeStation Technologies, Inc. All Rights Reserved.

www.historicalstockresearch.com

Improve Chart Reading. Make Better Decisions.

All Rights Reserved. Reproduction without permission prohibited
Copyright© Historicalstockresearch.com

Chart 21: 1st major correction of an uptrend usually results in higher stock prices

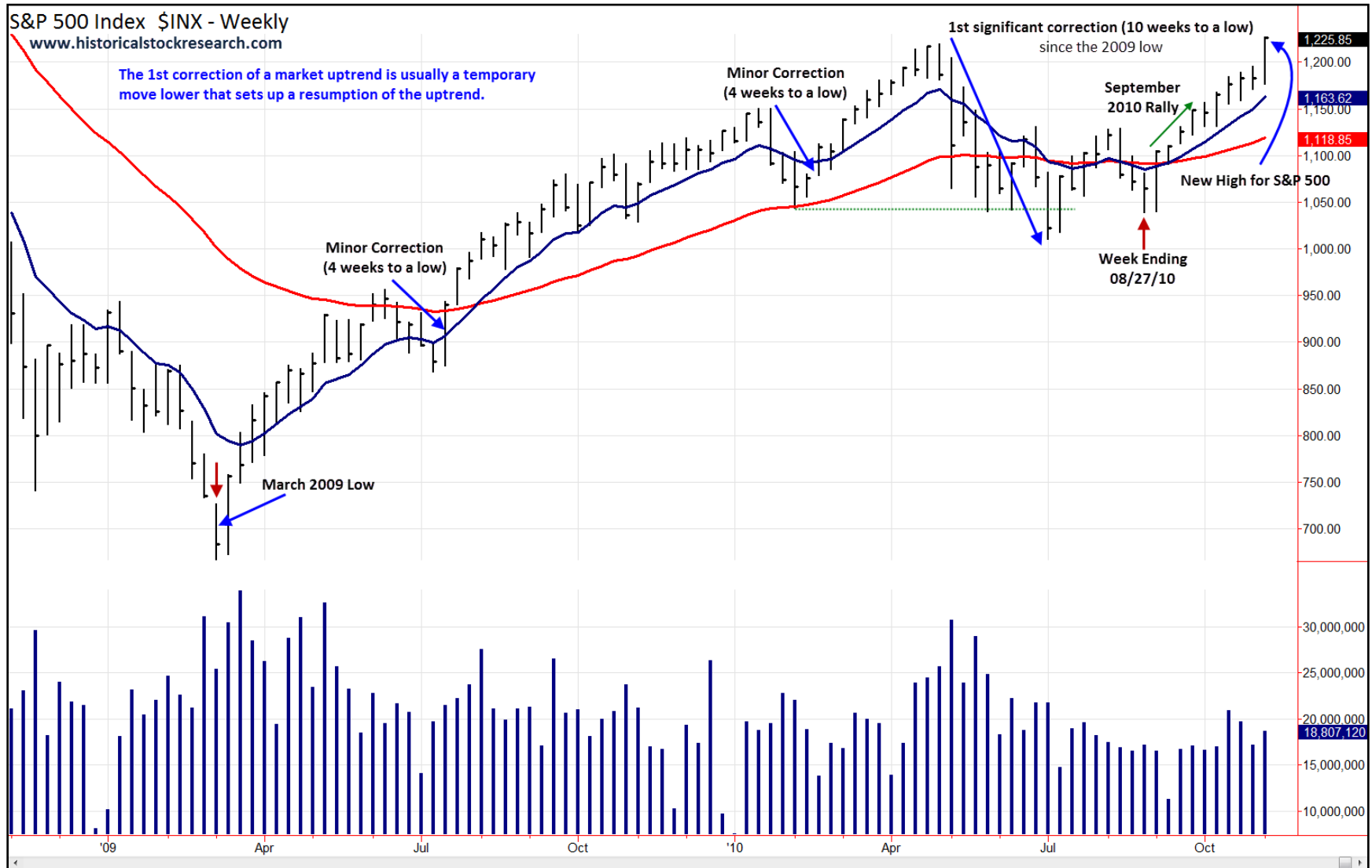


Chart created with TradeStation. ©TradeStation Technologies, Inc. All Rights Reserved.

www.historicalstockresearch.com

Improve Chart Reading. Make Better Decisions.

All Rights Reserved. Reproduction without permission prohibited
Copyright© Historicalstockresearch.com

Chart 22: Nasdaq bottoms in July 2010 after undercutting a prior low (February 2010)

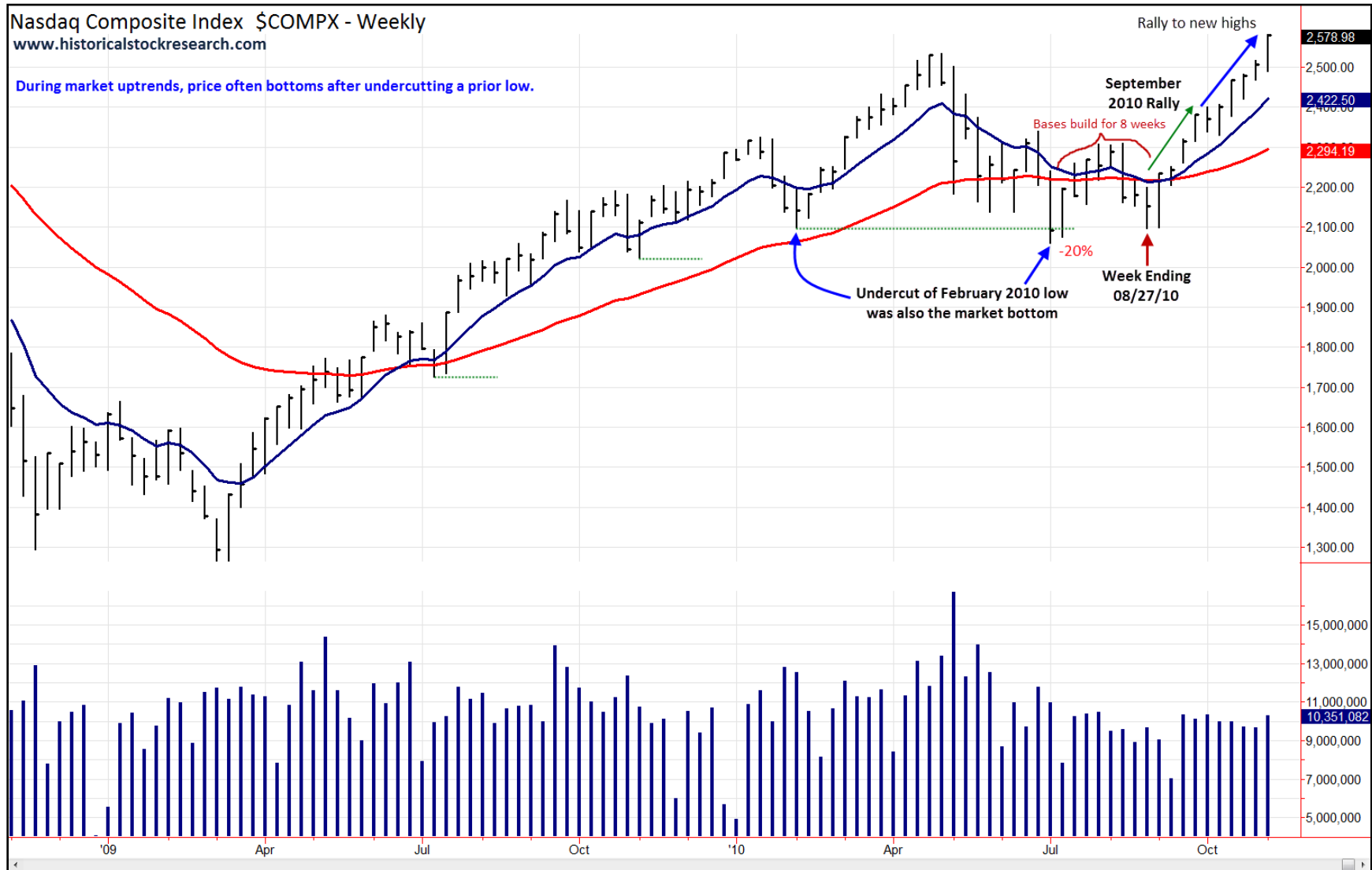


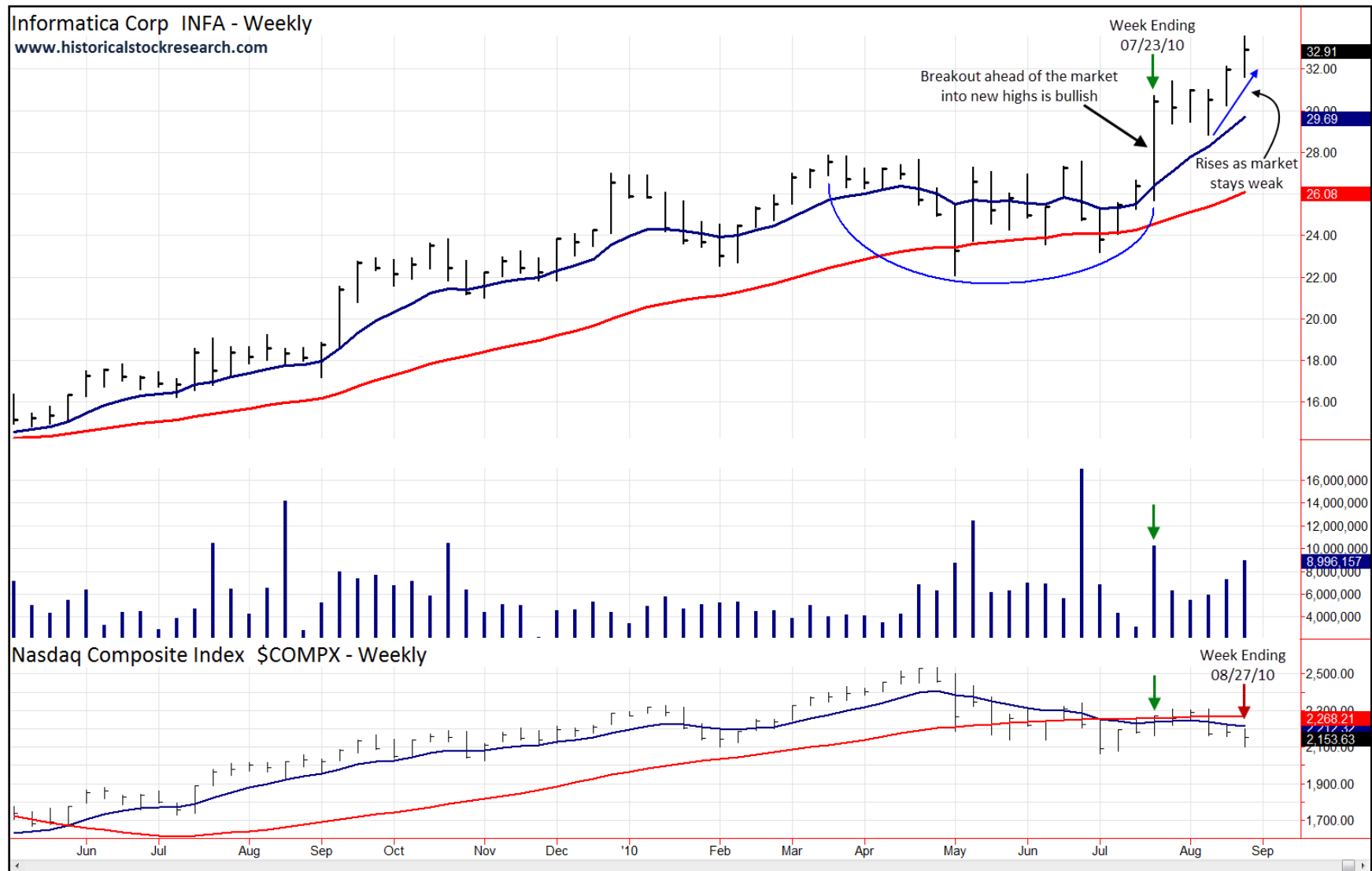
Chart created with TradeStation. ©TradeStation Technologies, Inc. All Rights Reserved.

www.historicalstockresearch.com

Improve Chart Reading. Make Better Decisions.

All Rights Reserved. Reproduction without permission prohibited
Copyright© Historicalstockresearch.com

Chart 23: Technology stocks often lead at the beginning of a market uptrend



25

Chart created with TradeStation. ©TradeStation Technologies, Inc. All Rights Reserved.

www.historicalstockresearch.com

Improve Chart Reading. Make Better Decisions.

All Rights Reserved. Reproduction without permission prohibited
Copyright© Historicalstockresearch.com

Chart 24: Mature bases often precede market uptrends and they were present in August 2010

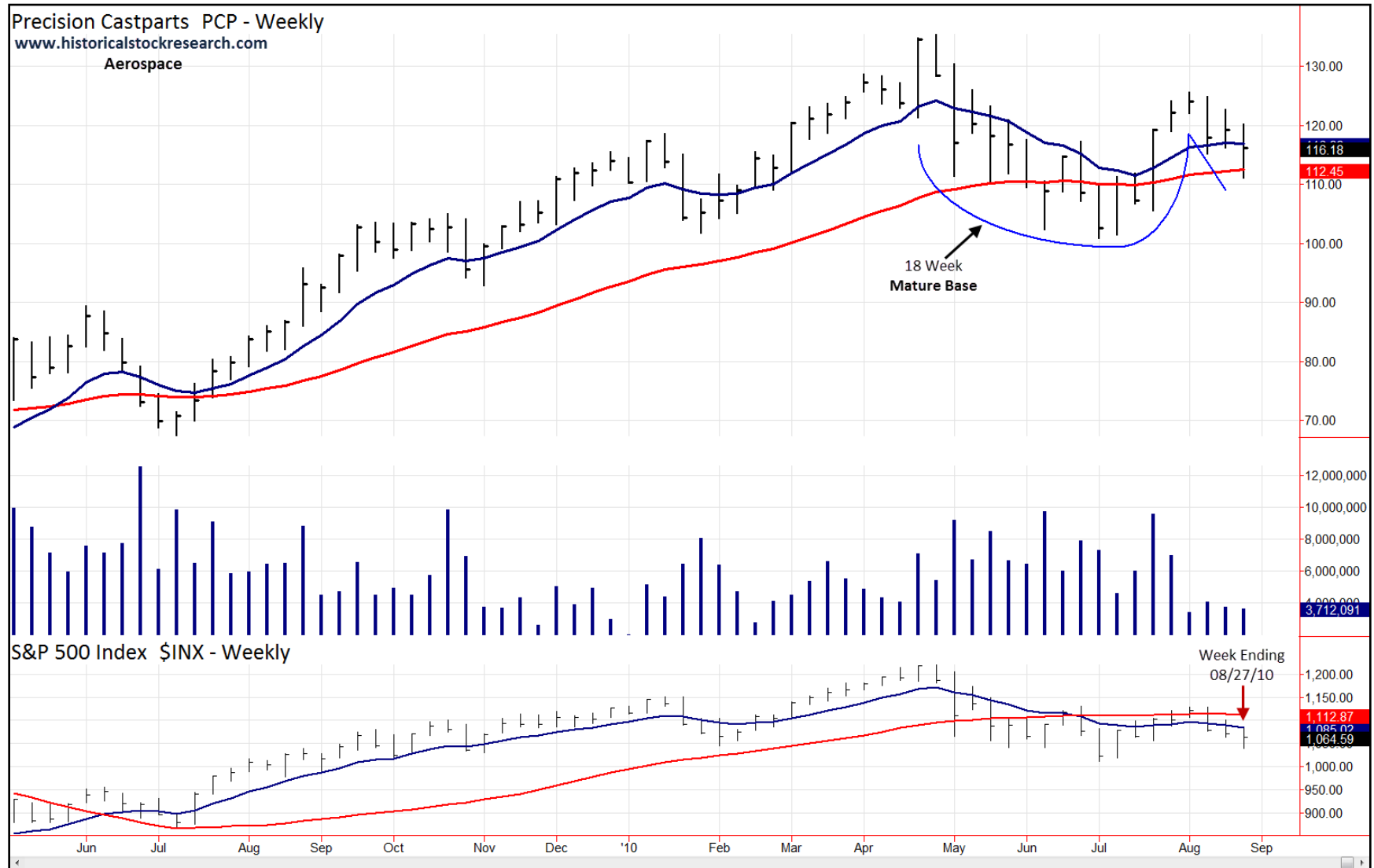


Chart created with TradeStation. ©TradeStation Technologies, Inc. All Rights Reserved.

www.historicalstockresearch.com

Improve Chart Reading. Make Better Decisions.

All Rights Reserved. Reproduction without permission prohibited
Copyright© Historicalstockresearch.com

Chart 25: Mature bases often precede market uptrends and they were present in August 2010

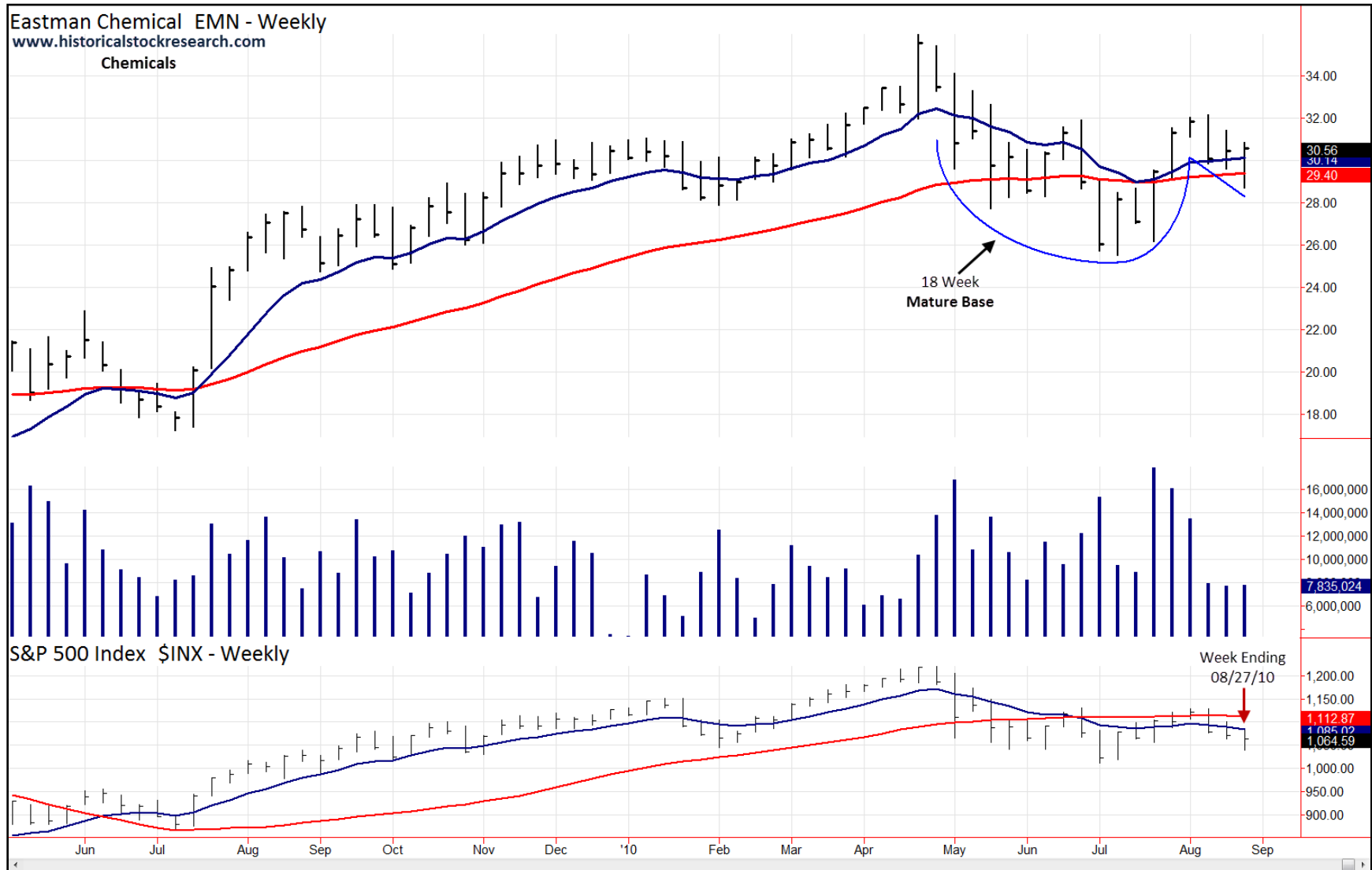


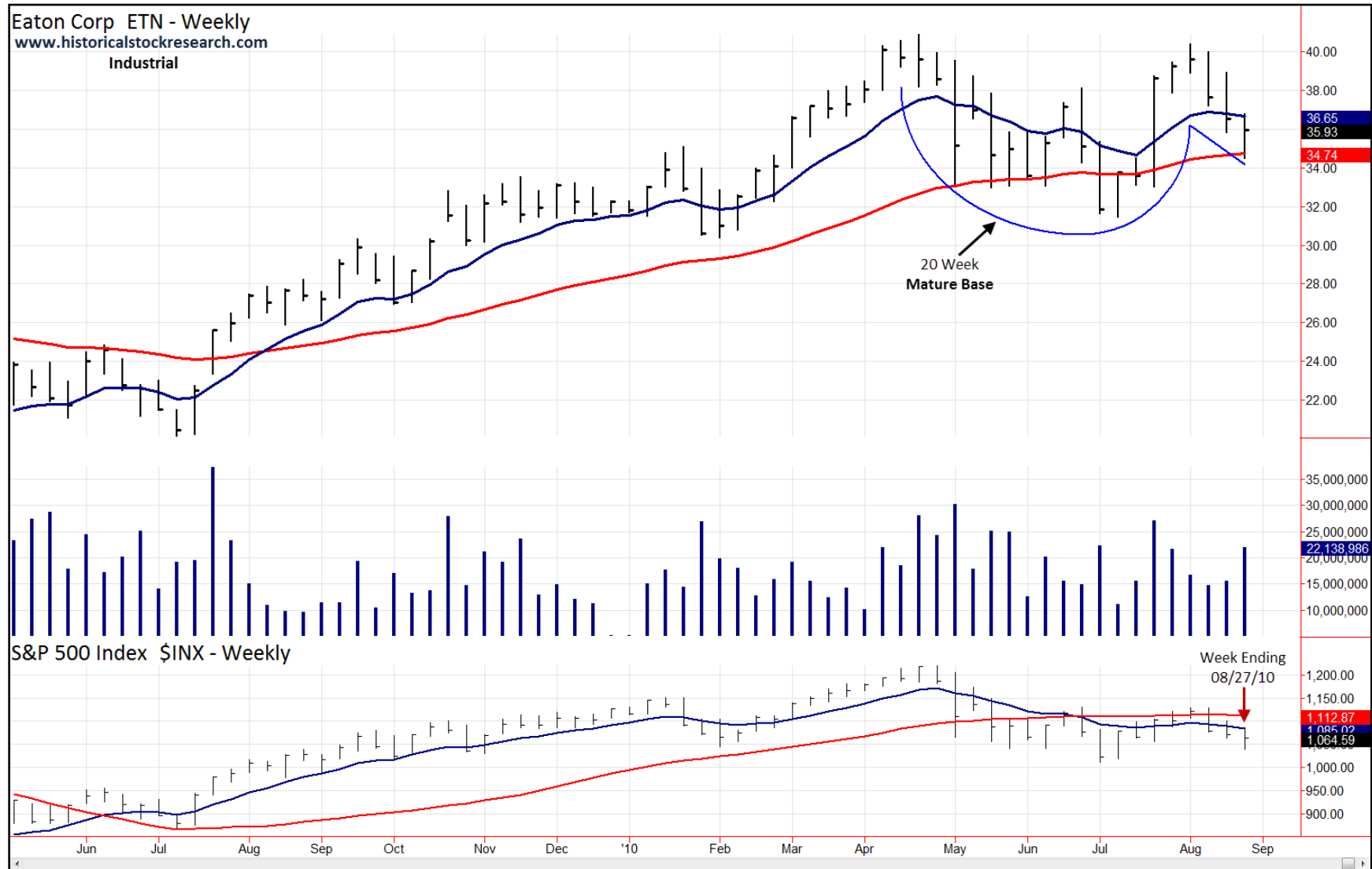
Chart created with TradeStation. ©TradeStation Technologies, Inc. All Rights Reserved.

www.historicalstockresearch.com

Improve Chart Reading. Make Better Decisions.

All Rights Reserved. Reproduction without permission prohibited
Copyright© Historicalstockresearch.com

Chart 26: Mature bases often precede market uptrends and they were present in August 2010



28

Chart created with TradeStation. ©TradeStation Technologies, Inc. All Rights Reserved.

www.historicalstockresearch.com

Improve Chart Reading. Make Better Decisions.

All Rights Reserved. Reproduction without permission prohibited
Copyright© Historicalstockresearch.com

Chart 27: Mature bases often precede market uptrends and they were present in August 2010

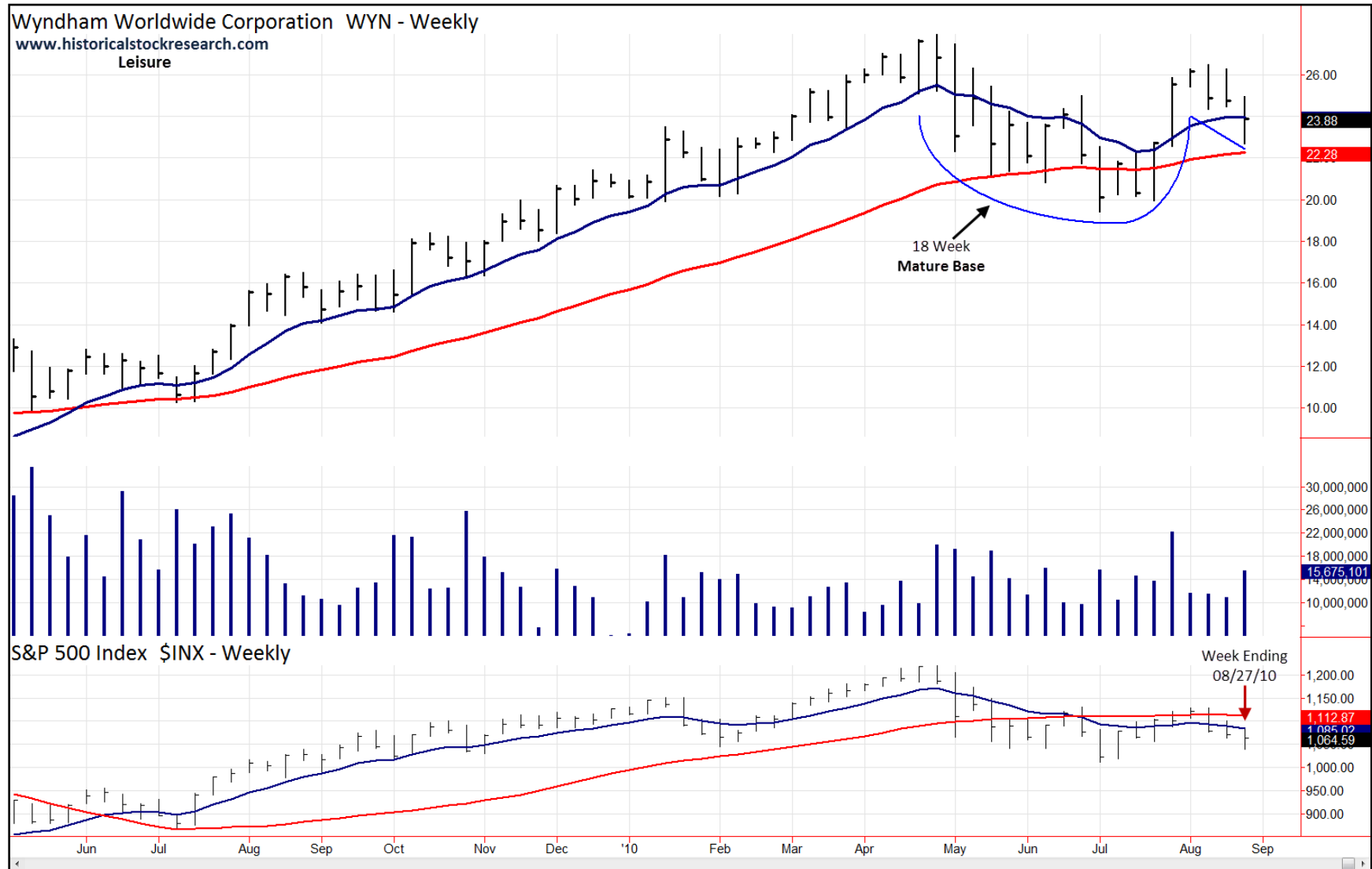


Chart created with TradeStation. ©TradeStation Technologies, Inc. All Rights Reserved.

www.historicalstockresearch.com

Improve Chart Reading. Make Better Decisions.

All Rights Reserved. Reproduction without permission prohibited
Copyright© Historicalstockresearch.com

Chart 28: Mature bases often precede market uptrends and they were present in August 2010

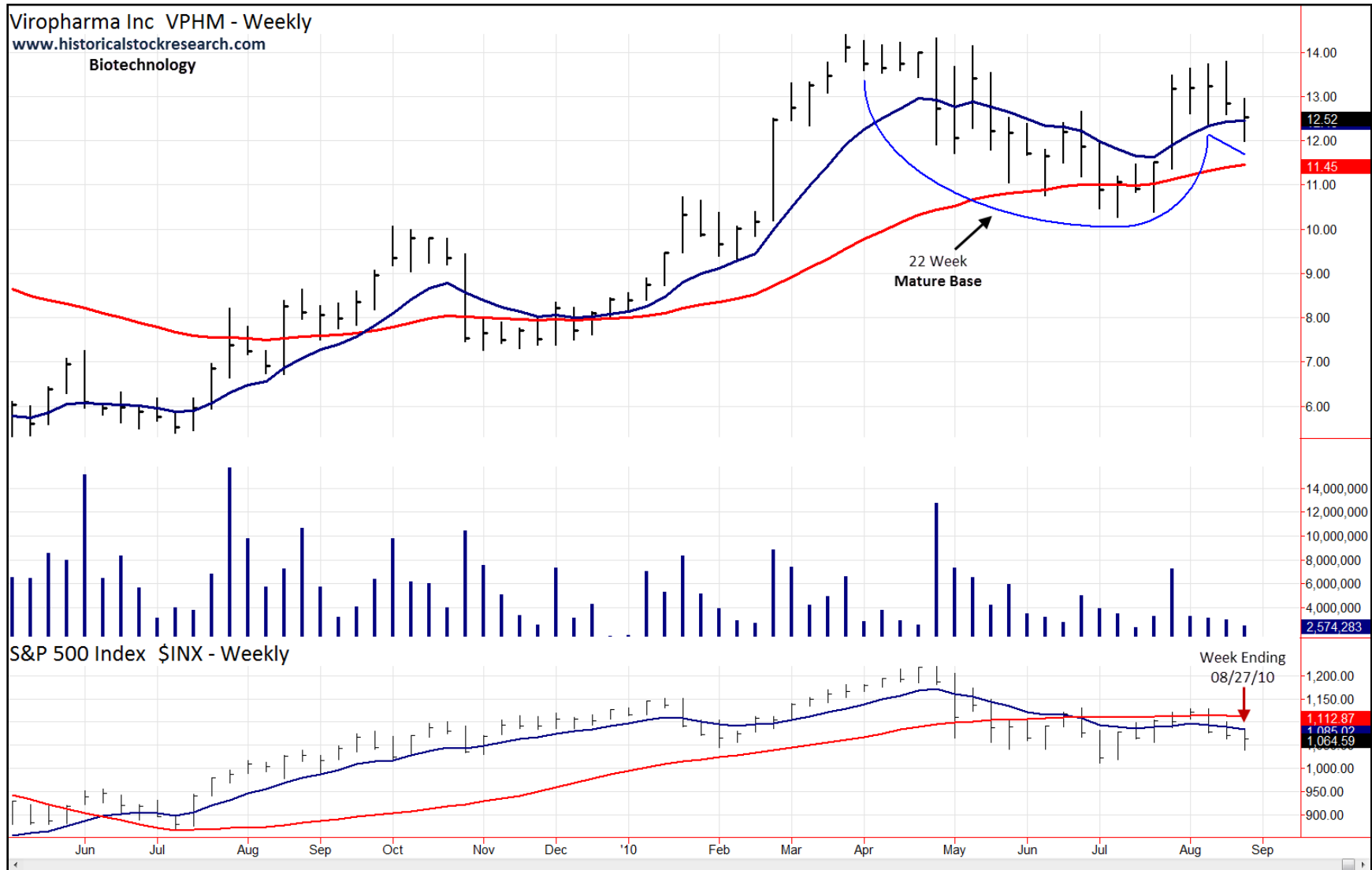


Chart created with TradeStation. ©TradeStation Technologies, Inc. All Rights Reserved.

www.historicalstockresearch.com

Improve Chart Reading. Make Better Decisions.

All Rights Reserved. Reproduction without permission prohibited
Copyright© Historicalstockresearch.com

Chart 29: Negative sentiment trumped the positive technicals during September 2010

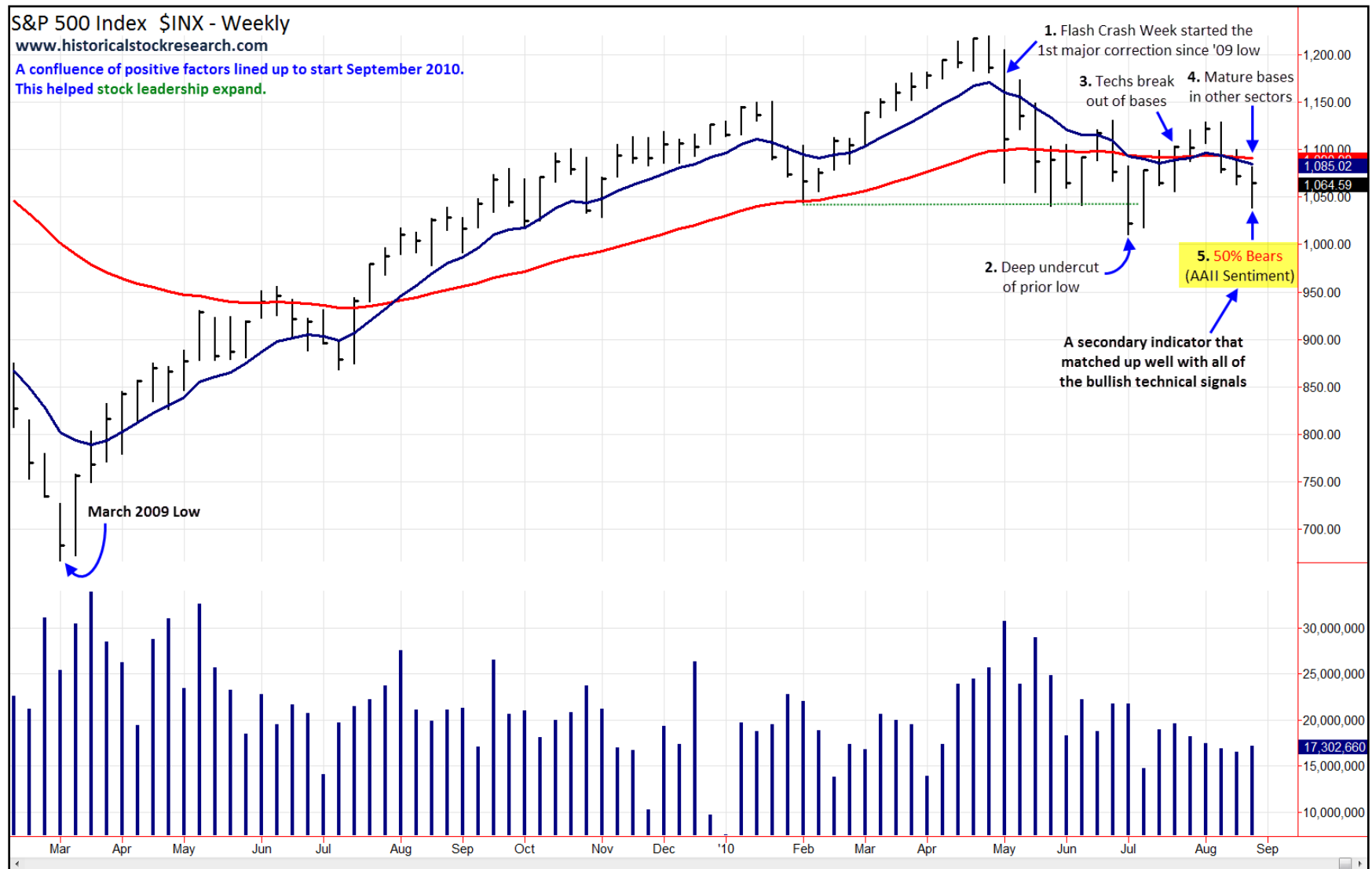


Chart created with TradeStation. ©TradeStation Technologies, Inc. All Rights Reserved.

www.historicalstockresearch.com

Improve Chart Reading. Make Better Decisions.

All Rights Reserved. Reproduction without permission prohibited
Copyright© Historicalstockresearch.com

Chart 30: Positive sentiment trumped the negative technicals during September 2000

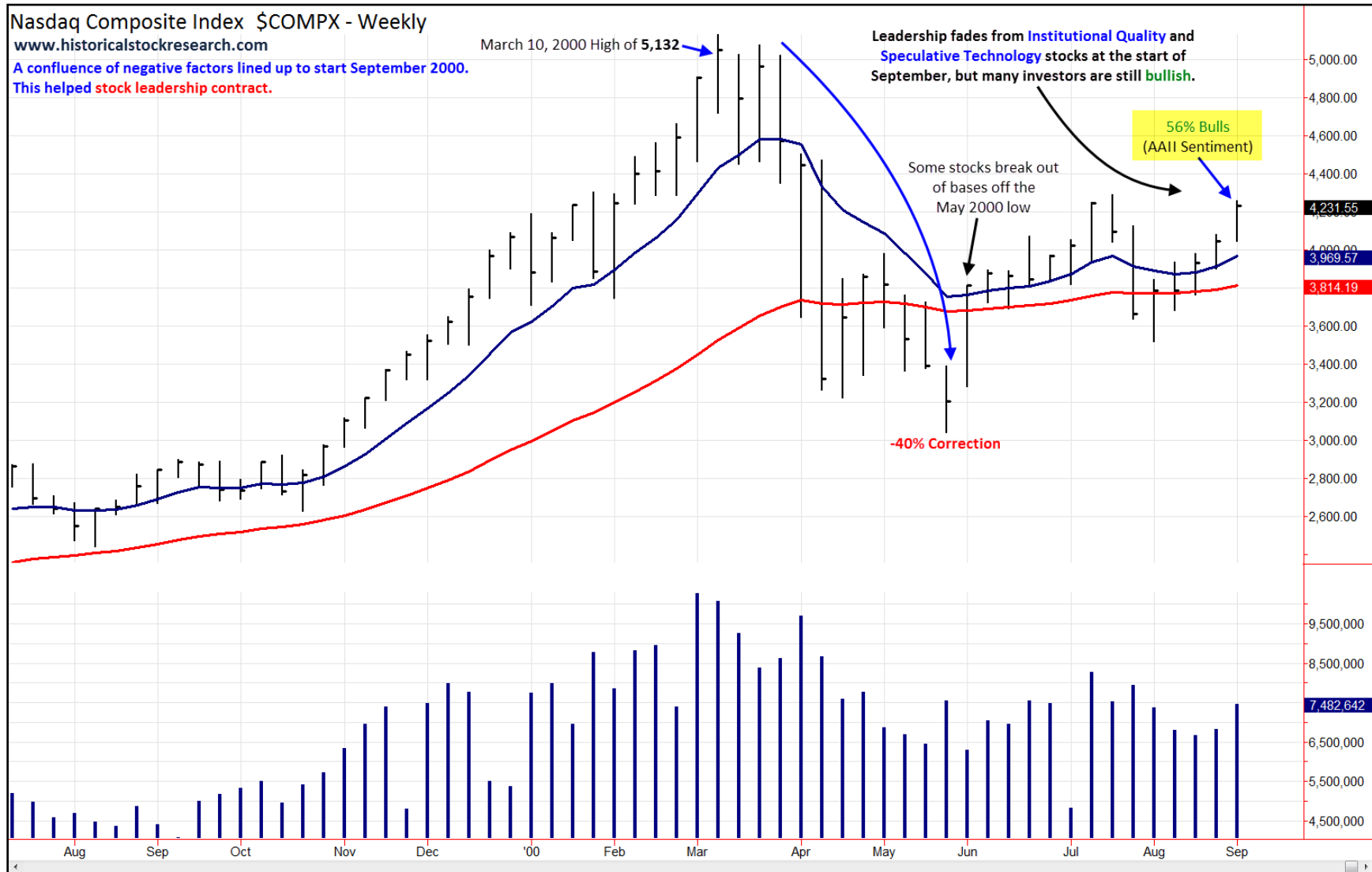


Chart created with TradeStation. ©TradeStation Technologies, Inc. All Rights Reserved.

www.historicalstockresearch.com

Improve Chart Reading. Make Better Decisions.

All Rights Reserved. Reproduction without permission prohibited
Copyright© Historicalstockresearch.com

33

